



# Decking, Fencing and Landscaping



millboard  
Live. Life. Outside.

Platinum  
Distributor









Garden Gurus Partnership Ltd | [www.gardengurus.co.uk](http://www.gardengurus.co.uk)

At Champion Timber we understand how important it is to have the right product for your garden design. Our branches keep huge stocks of Fencing, Decking and Landscaping products to suit all garden builders, landscape contractors and homeowners.

## Contents

Softwood Decking	5
Hardwood Decking	7
Millboard Decking	9
Ecodek	15
Balustrading	16
Decking Accessories and Fixings	19
Joistmate Timber	21
Landscaping Sleepers	23
Landscaping Battens	25
Landscapers Joinery Timber	27
Feather Edge Fencing	29
Fence Panels	31
Lattice, Picket, Trellis Panels & Flower Walks	35
Timber Posts	36
External Claddings, Membranes and Fixings	37
Gates and Accessories for Fencing and Gates	40
Ironmongery	42
Deck and Fence Treatments	44
Garden Paint	48
Services and how to buy	49
Specified Items for Garden Design	50
Installation Recommendations	51
Responsible Timber Purchasing Policy	54
Environmental	55

E&OE. © Champion Timber March 2024







# Softwood Decking

With sales of over 2 million metres, our range of softwood decking is the choice of landscapers and garden builders. Machined from slow grown European redwood, graded to minimise the number and size of knots, pressure treated to UC4 (suitable for burying in the ground so a very durable treatment).

Smooth and ribbed reversible profile plus an anti-slip option.

Code	Description
32125RDGS*	32 x 125mm Nom. Pressure Treated Redwood Decking Ribbed/Smooth
38150RDGR**	38 x 150mm Nom. Pressure Treated Redwood Decking Ribbed/Smooth
32125ASTD	32 x 125mm Nom. Anti-Slip Treated Redwood Decking with Gripdeck Modification

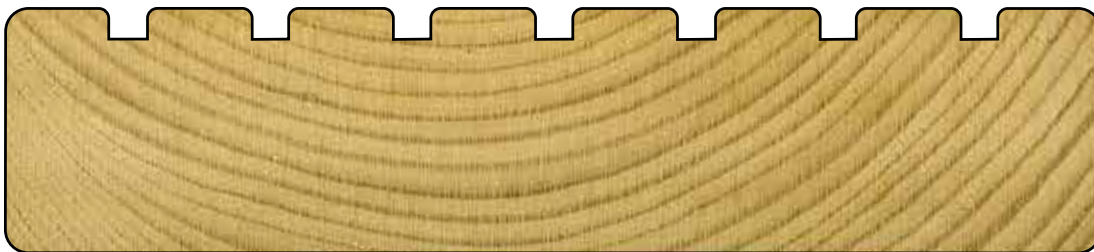
\* 3.6m, and 4.2m lengths only. \*\*4.2m lengths only.



**What is UC4  
Treated Timber?**  
See page 21



32125RDGS



38150RDGR



32125RDGS



32125ASTD



38150RDGR



Installation recommendations	Page 51	Other accessories including balustradings	Page 16
Decking joists and framework	Page 21	Services and how to buy	Page 49
Decking screws, clip & hidden fixings	Page 18		



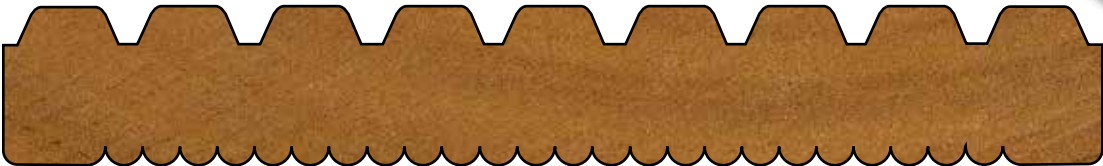


# Hardwood Decking

We have huge stocks of hardwood deck boards, selected and graded to reduce defects, machined from timbers that are naturally very durable and hardwearing. The range includes reversible ribbed and reeded profiles, smooth faces and an anti-slip option for a beautiful and practical deck.



Code	Description
22100BD	19 x 90mm Hardwood Decking Reeded / Smooth
25150HDS	21 x 145mm Hardwood Decking Smooth 2 Sides
25150BD	21 x 145mm Hardwood Decking Reeded / Ribbed
32150BD	27 x 145mm Hardwood Decking Reeded / Ribbed
25150ASHD	21 x 145mm Anti-Slip Hardwood Decking with Grey Gripdeck Modification



25150BD



25150HDS



25150HDS



25150BD



22100BD



32150BD



25150ASHD



Installation recommendations	Page 51	Other accessories including balustradings	Page 16
Decking joists and framework	Page 21	Services and how to buy	Page 49
Decking screws, clip & hidden fixings	Page 18		





Antique Oak 32176MADD36	Brushed Basalt 32176MBBD36	Burnt Cedar 32176MBC36	Coppered Oak 32176MCD36
Golden Oak 32176MGDD36	Jarrah 32176MJD36	Limed Oak 32176MLD36	Smoked Oak 32176MSD36
Weathered Oak Driftwood 32200MWDD36	Weathered Oak Vintage 32200MWVD36	Weathered Oak Embered 32200MCD36	Ashwood 32126MAD36
Ebony Grey 32126MEGD36			



# Millboard Decking - We are a Millboard Platinum Distributor

Millboard is a non timber high performance product moulded from polymer resin and natural minerals, environmentally friendly, and naturally slip resistant. It is hand finished with an enhanced grain for a textured feel. Once fixed with the Millboard screws the fixings are completely hidden. It is very durable and available in wide range of colours and finishes



Code	Description
32176MAD36	32 x 176 x 3600mm Millboard Enhanced Grain Ashwood Decking
32176MEGD36	32 x 176 x 3600mm Millboard Enhanced Grain Ebony Grey Decking
32176MAOD36	32 x 176 x 3600mm Millboard Enhanced Grain Antique Oak Decking
32176MBBD36	32 x 176 x 3600mm Millboard Enhanced Grain Brushed Basalt Decking
32176MBC36	32 x 176 x 3600mm Millboard Enhanced Grain Burnt Cedar Decking
32176MCOD36	32 x 176 x 3600mm Millboard Enhanced Grain Coppered Oak Decking
32176MGOD36	32 x 176 x 3600mm Millboard Enhanced Grain Golden Oak Decking
32176MJD36	32 x 176 x 3600mm Millboard Enhanced Grain Jarrah Decking
32176MLOD36	32 x 176 x 3600mm Millboard Enhanced Grain Limed Oak Decking
32176MSOD36	32 x 176 x 3600mm Millboard Enhanced Grain Smoked Oak Decking
32200MWOD36	32 x 200 x 3200mm Millboard Weathered Oak Driftwood Decking
32200MWVD36	32 x 200 x 3200mm Millboard Weathered Oak Vintage Decking
32200MCED36	32 x 200 x 3200mm Millboard Weathered Oak Embred Decking

Code	Description
32126MSOD36	32 x 126 x 3600mm Narrow Millboard Enhanced Grain Smoked Oak Decking
32126MLOD36	32 x 126 x 3600mm Narrow Millboard Enhanced Grain Limed Oak Decking
32126MGOD36	32 x 126 x 3600mm Narrow Millboard Enhanced Grain Golden Oak Decking
32126MCOD36	32 x 126 x 3600mm Narrow Millboard Enhanced Grain Coppered Oak Decking
32126MBCOD36	32 x 126 x 3600mm Narrow Millboard Enhanced Grain Burnt Cedar Decking
32126MBBD36	32 x 126 x 3600mm Narrow Millboard Enhanced Grain Brushed Basalt Decking
32126MAOD36	32 x 126 x 3600mm Narrow Millboard Enhanced Grain Antique Oak Decking
32126MEGD36	32 x 126 x 3600mm Millboard Enhanced Grain Ebony Grey Decking
32126MAD36	32 x 126 x 3600mm Millboard Enhanced Grain Ashwood Decking



Millboard touch ups in all colours are available in 500ml tins. See page 13.



<p><b>Hand moulded &amp; coloured</b> Skillfully hand-crafted to ensure a high quality, premium product</p>	<p><b>Natural wood look</b> Moulded from selected oak for an organic, realistic wood-grain appearance</p>	<p><b>Recycled materials</b> Recycled materials and renewable biopolymers are used within our boards</p>	<p><b>Integrated UV stabilisers</b> UV stabilised for better performance and fade resistance overtime</p>
<p><b>Wood free</b> Wood free composition prevents rot, warping and insect infestation</p>	<p><b>Mould resistant</b> Unlike wood, it is actively resistant to mould and fungus</p>	<p><b>Impact &amp; weather resistant</b> Elastomeric surface ensures increased resilience against natural weathering</p>	<p><b>Moisture resistant</b> Due to the non-porous composition, no sealing is required</p>







# Millboard Edging & Fascias

## FASCIAS

Code	Size	Type/Colour
16146MEGRF32	16 x 146 x 3600mm	Millboard Enhanced Grain Ebony Grey Fascia
16146MARF32	16 x 146 x 3600mm	Millboard Enhanced Grain Ashwood Fascia
16146MAORF32	16 x 146 x 3600mm	Millboard Enhanced Grain Antique Oak
16146MBBRF32	16 x 146 x 3600mm	Millboard Enhanced Grain Brushed Basalt
16146MBCRF32	16 x 146 x 3600mm	Millboard Enhanced Grain Burnt Cedar
18146MCORF24	16 x 146 x 3600mm	Millboard Enhanced Grain Coppered Oak
16146MECRF32	16 x 146 x 3600mm	Millboard Enhanced Grain Embered Oak
18150MGOE24	16 x 146 x 3600mm	Millboard Enhanced Grain Golden Oak
16146MJRF32	16 x 146x 3600mm	Millboard Enhanced Grain Jarrah
18146MLORF24	16 x 146 x 3600mm	Millboard Enhanced Grain Limed Oak
18146MSORF24	16 x 146 x 3600mm	Millboard Enhanced Grain Smoked Oak/Driftwood
16146MVORF32	16 x 146 x 3600mm	Millboard Vintage Oak

## BULLNOSED BOARD

Code	Size	Type/Colour
32150MAOBB32	32 x 150 x 3600mm	Millboard Enhanced Grain Antique Oak
32150MBBB32	32 x 150 x 3600mm	Millboard Enhanced Grain Brushed Basalt
32150MBCBB32	32 x 150 x 3600mm	Millboard Enhanced Grain Burnt Cedar
32150MCOB32	32 x 150 x 3600mm	Millboard Enhanced Grain Coppered Oak
32150MCHB32	32 x 150 x 3600mm	Millboard Enhanced Grain Embered Oak
32150MGOB32	32 x 150 x 3600mm	Millboard Enhanced Grain Golden Oak
32150MLOB32	32 x 150 x 3600mm	Millboard Enhanced Grain Limed Oak
32150MSDB32	32 x 150 x 3600mm	Millboard Enhanced Grain Smoked Oak/ Driftwood
32150MEGB32	32 x 150 x 3600mm	Millboard Enhanced Grain Vintage
32150MJB32	32 x 150 x 3600mm	Millboard Enhanced Grain Jarrah
32150MEGB32	32 x 150 x 3600mm	Millboard Enhanced Grain Ebony Grey
32150MAB32	32 x 150 x 3600mm	Millboard Enhanced Grain Ashwood

## FLEXIBLE SQUARE EDGING

Supplied as 2.4m lengths

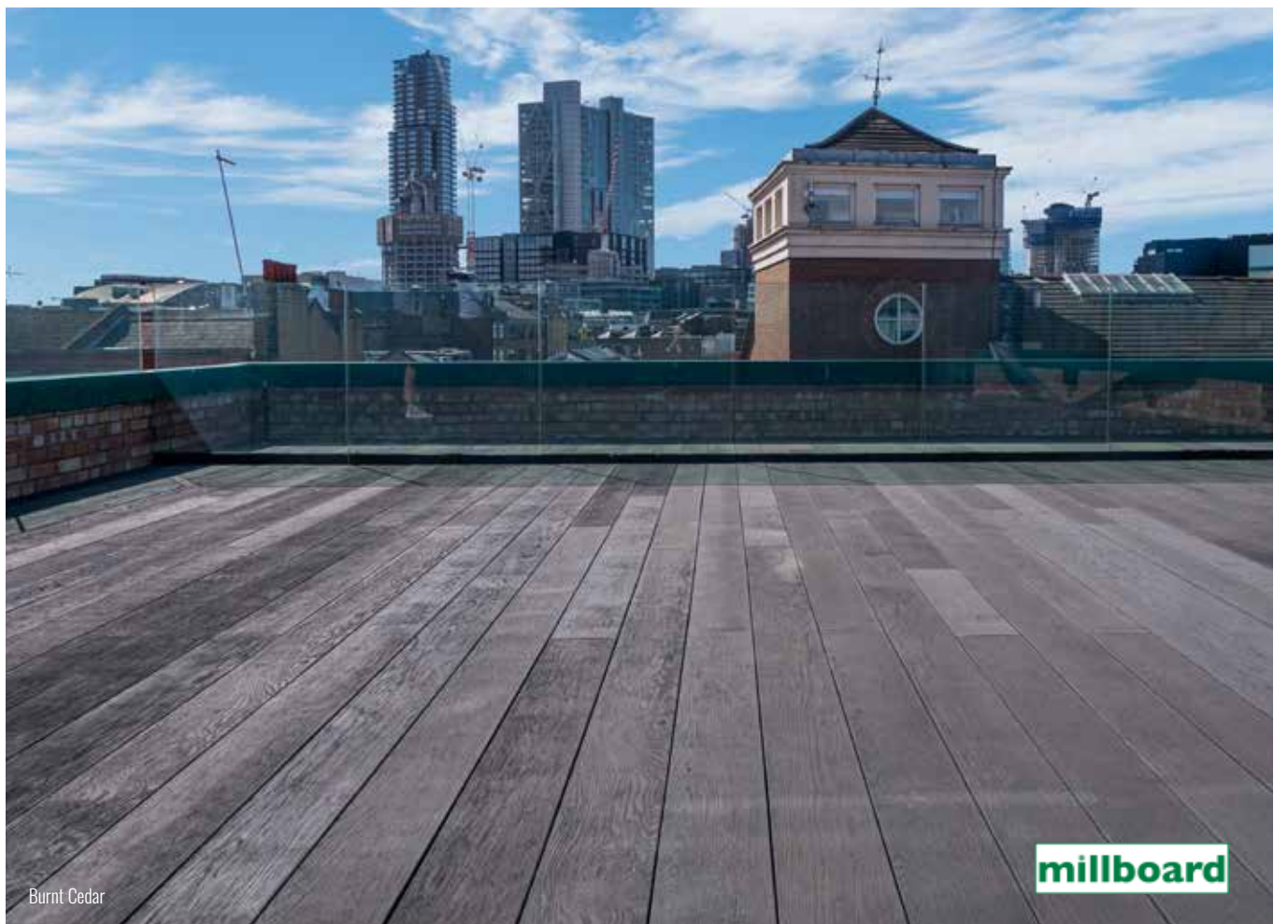
Code	Size	Type/Colour
24846080	33 x 50mm	Millboard Antique Oak
24893916	33 x 50mm	Millboard Brushed Basalt
24840897	33 x 50mm	Millboard Burnt Cedar
24834681	33 x 50mm	Millboard Coppered Oak
24829359	33 x 50mm	Millboard Embered Oak
24869515	33 x 50mm	Millboard Golden Oak
24891165	33 x 50mm	Millboard Jarrah
24879880	33 x 50mm	Millboard Limed Oak
24894951	33 x 50mm	Millboard Smoked Oak/Driftwood
24890281	33 x 50mm	Millboard Flexible Ashwood
24875714	33 x 50mm	Millboard Flexible Ebony Grey



## BULLNOSED EDGE

Code	Size	Type/Colour
3350MCOBSEF24	33 x 50 x 2400mm	Millboard Coppered Oak Bullnosed Step Edge Flexible
3350MJBSEF24	33 x 50 x 2400mm	Millboard Jarrah Bullnosed Step Edge Flexible
3350MJBSEF24	33 x 50 x 2400mm	Millboard Golden Oak Bullnosed Step Edge Flexible
3350MLOBSEF24	33 x 50 x 2400mm	Millboard Limed Oak Bullnosed Step Edge Flexible
3350MVOBSEF24	33 x 50 x 2400mm	Millboard Vintage Oak Bullnosed Step Edge Flexible
3350MSDBSEF24	33 x 50 x 2400mm	Millboard Smoked/Driftwood Bullnosed Step Edge Flexible
3350MBBSE24	33 x 50 x 2400mm	Millboard Brushed Basalt Bullnosed Step Edge Flexible
3350MAOBSE24	33 x 50 x 2400mm	Millboard Antique Oak Bullnosed Step Edge Flexible
3350MABSEF24	33 x 50 x 2400mm	Millboard Ashwood Bullnosed Step Edge Flexible
3350MEGBSEF24	33 x 50 x 2400mm	Millboard Ebony Grey Bullnosed Step Edge Flexible
3350MBCBSE24	33 x 50 x 2400mm	Millboard Burnt Cedar/Embered Bullnosed Step Edge Flexible







# Composite Subframe & Accessories

## Composite Subframe - 100% recycled material

5050BCJ24	Black Composite Joist/Bearer 50 x 50 x 2400mm Nom.
50125BCJ30	Black Composite Joist/Bearer 50 x 125 x 3000mm Nom.
100100BCP30	Black Composite Post 100 x 100 x 3000mm Nom.
38100MBCJ34	Grey Composite Plas-Pro Fixing Baton 30 x 60 x 2800mm

## DuoLift System

24810784	DuoLift Acoustic Separation Pads (Packet 10)
24815222	DuoLift Feet 45mm (Box 10)
48390200	DuoLift Joist Cradle 15-60mm (Box 10)
24815475	DuoLift Risers 45mm (Box 10)
24890908	DuoLift Self Levelling Joint 20mm (Box 10)



38100MBCJ34

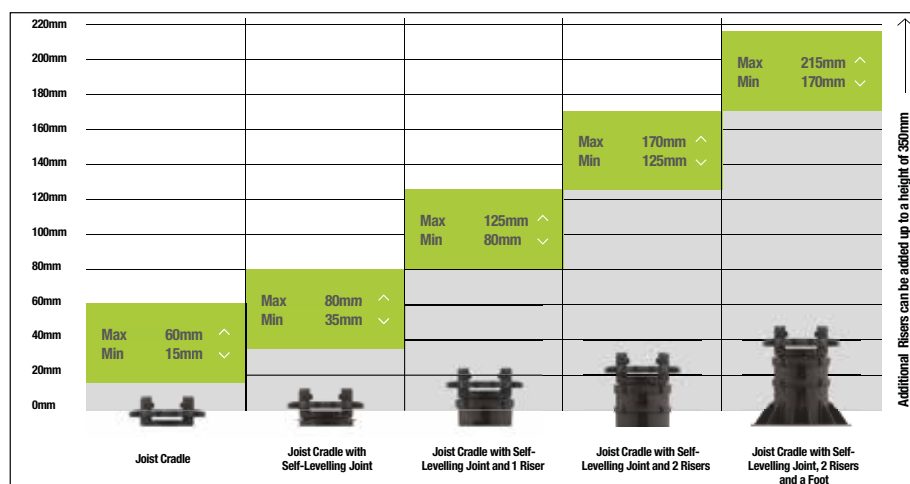


100100MBCP30



Provides a 15-60mm Joist Cradle with a sequence of support components that can raise the height to a maximum of 350mm, with a twist lock system.

- Simple stackability for height flexibility.
- Multiple height combinations from four sturdy components.
- With a selection of components on site, installation delays can be avoided.



## DuoSpan System

24824194	Millboard DuoSpan 51 Bracket 90° (Box 10)
24845816	Millboard DuoSpan 51 Flexible Bracket (Box 10)
24803014	Millboard DuoSpan 51 Straight Connector (Box 10)
24863391	Millboard DuoSpan 99 Bracket 90° (Box 10)
24837101	Millboard DuoSpan 99 Flexible Bracket (Box 10)
24844888	Millboard DuoSpan 99 Straight Connector (Box 10)
24831543	Millboard DuoSpan Beam 136 x 63 x 3600mm
24809009	Millboard DuoSpan Joist 51 x 68 x 3600mm
24897624	Millboard DuoSpan Joist 99 x 68 x 3600mm
24839457	Millboard DuoSpan Joist Insert 25 x 50 x 3000mm
24851275	Millboard DuoSpan Plas-Pro Fascia Support 100 x 25 x 3000mm
24861502	Millboard DuoSpan Hold Down Clip (Box 30)
23788640	Millboard DuoSpan to Plas-Pro Screws 50mm (Box 100)
23716438	Millboard DuoSpan Bracket to Plas-Pro Screws 25mm (Box 100)

## Millboard Fixings

23728431	4.5 x 60mm Millboard Fixing Screws (Box 250)
23719217	6.3 x 90mm Millboard Subframe Hexhead Screws (pack 50)

Touch up coating available in all colours in 500ml tins.

## Touch up Coating

24850223	Millboard Ashwood touch up coating 500 ml
24867344	Millboard Antique Oak touch up coating 500 ml
4833738	Millboard Burnt Cedar touch up coating 500 ml
24889612	Millboard Carbonised Oak touch up coating 500 ml
24813129	Millboard Coppered Oak touch up coating 500 ml
24885553	Millboard Ebony Grey touch up coating 500 ml
24811644	Millboard Golden Oak touch up coating 500 ml
24825368	Millboard Jarrah touch up coating 500 ml
24876827	Millboard Limed Oak touch up coating 500 ml
24849968	Millboard Smoked/Driftwood touch up coating 500 ml
24815857	Millboard Vintage Oak touch up coating 500 ml





# Composite Decking



## Ecodek Decking

Wood polymer solid composite deck board with attractive wood grain effect that will not stain, warp, split, flake or promote the growth of algae so it is the perfect low maintenance choice of decking board.



Code	Description
21136EHBS36	21 x 136 x 3600mm Ecodek Heritage "Brecon Shale" Solid Composite Decking
21136EHCP36	21 x 136 x 3600mm Ecodek Heritage "Cornish Pebble" Light Grey Solid Composite Decking
21136EHMP36	21 x 136 x 3600mm Ecodek Heritage "Pennine Millstone" Solid Composite Decking
21136EHWS36	21 x 136 x 3600mm Ecodek Heritage "Welsh Slate" Dark Grey Solid Composite Decking



Brecon Shale  
21136EHBS36



Cornish Pebble  
21136EHCP36



Pennine Millstone  
21136EHMP36



Welsh Slate  
21136EHWS36



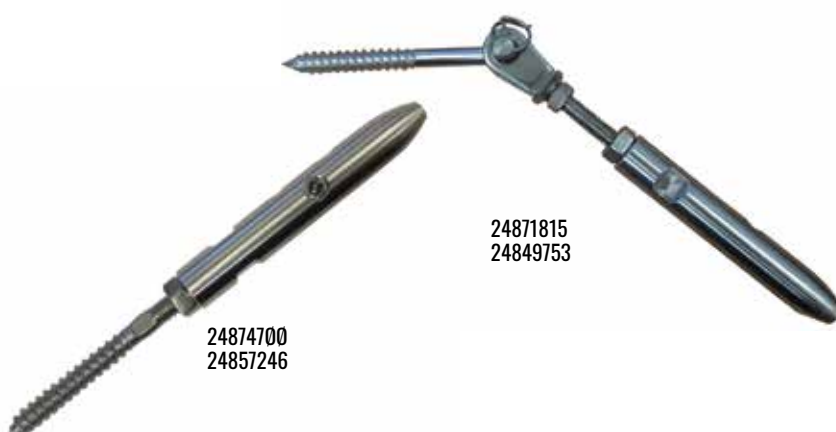
Code	Description
23753495	53mm Ecodek Pebble Light Grey Steel Screws (Box Of 200)
23789852	53mm Ecodek Slate Dark Grey Steel Screws (Box Of 200)
24520201	Carpenters Mate Decking No. 8 Smart-Bit Tool
24539012	Carpenters Mate Decking No. 8 Smart-Bit Replacement Bits refills Pk5





## Stainless Steel Wire System

Code	Description
24824712	Stainless Balustrading Wire 4mm (100 Metre Coil)
24842129	Stainless Balustrading Wire 4mm (50 Metre Coil)
24826297	Stainless Balustrading Wire 4mm (30 Metre Coil)
24888608	Stainless Balustrading Wire 4mm Cutting Tool
24871815	Stainless Balustrading Wire System Fitting Angled Into Wood Left Hand
24849753	Stainless Balustrading Wire System Fitting Angled Into Wood Right Hand
24874700	Stainless Balustrading Wire System Fitting Straight Into Wood Left Hand
24857246	Stainless Balustrading Wire System Fitting Straight Into Wood Right Hand



For more detailed instructions on fitting please refer to page 51

## Decking Components - Naturally durable

Code	Description
<b>Hardwood Decking Components</b>	
5050SDB09	Sapele Decking Spindle 44 x 44 x 900mm
5075SCHBR	Sapele Planed & Chamfered 44mm Grooved Landscapers Hand/Base rail 44 x 66mm
1250SF	Sapele Hand/Baserail Fillet 9 x 44mm
<b>Softwood Decking Components</b>	
Spindles - Treated for external use	
24890359	Cheshire Treated Pine Deck Square Spindle 41 x 41 x 895mm
24840293	Cheshire Treated Pine Deck Square Spindle 41 x 41 x 1100mm
24809085	Cheshire Treated Pine Deck Stop Chamfered Spindle 41 x 41 x 895mm
24830126	Cheshire Treated Pine Deck Turned Spindle 41 x 41 x 895mm
24885850	Cheshire Treated Pine Deck American Spindle 27 x 27 x 895mm
<b>Handrails and Baserails</b>	
24873642	Cheshire Treated Pine Deck Universal Hand/Base Rail 38 x 75 x 2400mm
24840675	Cheshire Treated Pine Deck Universal Hand/Base Rail 44 x 68 x 2400mm Includes Fillets
24891509	Cheshire Deck Handrail Fixing Kit 1 Pair
24827003	Cheshire Treated Pine Deck American Spindle Rail 88 x 35 x 1795mm
24860192	Cheshire Deck Hand & Baserail Fixing Brackets to fit American Rail



Cheshire treated pine



## Decking Components

Code	Description
<b>Newel Posts</b>	
24813884	Cheshire Treated Pine Deck Square Newel Post 82 x 82 x 1250mm
24877305	Cheshire Treated Pine Deck Stop Chamfered Newel Post 82 x 82 x 1250mm
24866170	Cheshire Treated Pine Deck Stop Chamfered Newel Post 82 x 82 x 1500mm
24892742	Cheshire Treated Pine Ball Cap Turned Deck Newel 82 x 82 x 1250mm
24872997	Cheshire Treated Pine Ball Cap Turned Deck Newel 82 x 82 x 1500mm
24888325	Cheshire Treated Pine Deck Chamfered & Beaded Newel Post 82 x 82 x 1250mm
24892469	Cheshire Treated Pine Deck Chamfered & Beaded Newel Post 82 x 82 x 1500mm
24886369	Cheshire Treated Pine Deck Chamfered & Beaded Newel Post 82 x 82 x 2400mm
<b>Newel Caps</b>	
24888622	Cheshire Treated Pine Deck Acorn Cap 132 x 85 x 85mm
24802246	Cheshire Treated Pine Deck Ball Cap 132 x 85 x 85mm
24830638	Cheshire Treated Pine Deck Patrice Cap 27 x 115 x 115mm
<b>Decorative Decking Panels</b>	
24884624	Cheshire Treated Pine Deck Cross Hatch Panel 1130 x 760 x 38mm
24843119	Cheshire Treated Pine Deck Sunburst Panel 1130 x 760 x 38mm
<b>Decking Tread Strings</b>	
24893275	Cheshire Treated Pine 3 Tread Deck String 45 x 245 x 868mm
24893954	Cheshire Treated Pine 5 Tread Deck String 45 x 245 x 1447mm
<b>Glass Panel Decking System</b>	
24868013	Cheshire Deck Glass Panels 8 x 150 x 820mm (Pack of 7)
24840637	Cheshire Treated Pine Deck Rail for Glass 85 x 34 x 1795mm
24864855	Cheshire Treated Pine Deck Capping Rail 26 x 70 x 1795mm
24860192	Cheshire Deck Hand & Baseraill Fixing Brackets to fit Metal Rail
24820165	Cheshire Modern Deck Rail Universal Brackets to Fit Timber Newel
24819817	Cheshire Modern Deck Universal Rail Gun Metal 55 x 60 x 1800mm
24800365	Cheshire Modern Deck Newel Post Gun Metal 82 x 82 x 1200mm
24822145	Cheshire Modern Deck Newel Cap Gun Metal 5 x 80 x 80mm
24874656	Cheshire Modern Deck Newel Base Connector Gun Metal 98 x 98 x 335mm



Square Softwood



Stop Chamfered Softwood



Colonial Turned Softwood



Glass Panel with Metal



Glass Panel with Timber

# Decking Accessories & Fixings

Huge range of decking accessories for a fast and lasting installation.

Code	Description
<b>Landscape Screws</b>	
23777927	Champion Hex Head Loft/Landscape Screws 87mm Pack of 10
23752597	Champion Hex Head Loft/Landscape Screws 87mm Tub of 100
23711587	Champion Hex Head Loft/Landscape Screws 100mm Pack of 10
23733954	Champion Hex Head Loft/Landscape Screws 100mm Tub of 100
23763081	Champion Hex Head Loft/Landscape Screws 125mm Pack of 10
23755390	Champion Hex Head Loft/Landscape Screws 150mm Pack of 10
23740143	Champion Hex Head Loft/Landscape Screws 150mm Tub of 100
23764729	Champion Hex Head Loft/Landscape Screws 200mm Pack of 10
23738041	Champion Hex Head Loft/Landscape Screws 200mm Tub of 50
23794276	Champion Hex Head Loft/Landscape Screws 250mm Pack of 10
23708341	Champion Heavy Duty Loft/Landscape Screws 100mm Pack of 10
23796713	Champion Heavy Duty Loft/Landscape Screws 150mm Pack of 10
23778108	Champion Heavy Duty Loft/Landscape Screws 200mm Pack of 10
23728240	Champion Wafer Head Loft/Landscape Screws 95mm Pack of 10
23714472	Champion Wafer Head Loft/Landscape Screws 95mm Bulk Pack of 50
23742550	Champion Wafer Head Loft/Landscape Screws 150mm Pack of 10
23792890	Champion Wafer Head Loft/Landscape Screws 150mm Bulk Pack of 50
23768062	Spax Wirox Washer Head Torx Landscape screws 8.0 x 100mm (Box 50)
23771321	Spax Wirox Washer Head Torx Landscape screws 8.0 x 120mm (Box 50)
23726727	Spax Wirox Washer Head Torx Landscape screws 8.0 x 140mm (Box 50)
23793903	Spax Wirox Washer Head Torx Landscape screws 8.0 x 160mm (Box 50)
23784246	Spax Wirox Washer Head Torx Landscape screws 8.0 x 180mm (Box 50)
23724419	Spax Wirox Washer Head Torx Landscape screws 8.0 x 200mm (Box 50)
23770850	Spax Wirox Washer Head Torx Landscape screws 8.0 x 240mm (Box 50)
23778405	Spax Wirox Washer Head Torx Landscape screws 8.0 x 260mm (Box 50)
23745360	Spax Wirox Washer Head Torx Landscape screws 8.0 x 300mm (Box 50)
23713598	Spax Wirox Washer Head Torx Landscape screws 8.0 x 360mm (Box 50)
23797413	Spax Wirox Washer Head Torx Landscape screws 8.0 x 400mm (Box 50)
23769670	Spax Wirox Washer Head Torx Landscape screws 8.0 x 450mm (Box 25)
23728837	Spax Wirox Washer Head Torx Woodscrews 6.0 x 60mm (Pack 30)
23720886	Spax Wirox Washer Head Torx Woodscrews 6.0 x 80mm (Pack 24)
23707337	Spax Wirox Washer Head Torx Woodscrews 6.0 x 100mm (Pack 24)
23749771	Spax Wirox Washer Head Torx Woodscrews 6.0 x 120mm (Pack 24)
23754249	Spax Wirox Washer Head Torx Woodscrews 6.0 x 140mm (Pack 20)
23729254	Spax Wirox Washer Head Torx Woodscrews 6.0 x 160mm (Pack 20)
23758711	Spax Wirox Washer Head Torx Woodscrews 6.0 x 180mm (Pack 20)

23794269



23736436



23735927



23782372



23735798



23700604



**REISSER®**



**Stainless Steel Decking Screws**

23787643	Spax Stainless Steel Antique Torx Decking Screws 5.0 x 50mm (Box 200)
23722422	Spax Stainless Steel Antique Torx Decking Screws 5.0 x 60mm (Box 100)
23721661	Spax Stainless Steel Torx Decking Screws 5.0 x 40mm (Box 200)
23795884	Spax Stainless Steel Torx Decking Screws 5.0 x 50mm (Box 200)
23781757	Spax Stainless Steel Torx Decking Screws 5.0 x 60mm (Box 100)
23762213	Spax Stainless Steel Torx Decking Screws 5.0 x 70mm (Box 100)
23701670	Spax Stainless Steel Torx Decking Screws 5.0 x 80mm (Box 100)
23763449	Timco Stainless Steel Decking Screws 4.5 x 50mm (Tub 250)
23736436	Timco Stainless Steel Decking Screws 4.5 x 65mm (Tub 250)
23747883	Timco Stainless Steel Decking Screws 4.5 x 75mm (Tub 250)

**Decking Screws**

23782372	Spax 4.5 x 60mm Wirox C4 Torx Decking screw (Tub 250)
23778139	Reisser High Performance Decking Screws 4.5 x 63mm (Tub 500)
23788213	Timco C2 Advanced Green Decking Screws 4.5 x 50mm (Tub/Box 250)
23732247	Timco C2 Advanced Green Decking Screws 4.5 x 65mm (Tub/Box 250)
23700147	Timco C2 Advanced Green Decking Screws 4.5 x 75mm (Tub/Box 250)

**Millboard Screws**

23728431	4.5 x 60mm Millboard Fixing Screws (Box 250)
----------	--

Code	Description
------	-------------

**Anti Slip Tape**

23256514	Anti-Slip Tape P60 Grit Black & Yellow 50mm x 10m
----------	---

Code	Description
------	-------------

**Other Accessories**

100AFG	Acorn Finial for 100 x 100mm Post Green
100BFG	Ball Finial for 100 x 100mm Post Green
21597527	Polypropylene Decking Sheeting Black Bonded 2.0m x 10m Roll
24883641	Polypropylene Deck Sheet 160mm Fixing Pegs (Pk10) (Enough for 10m <sup>2</sup> )
20925642	Walther Strong Deck Tape 20m x 65mm
20917609	Walther Strong Deck Tape 20m x 100mm



20925642  
20917609



21597527



24883641



23256514



100BFG





# Joistmate Timber

## JOISTMATE Xtra

- Straight, smooth and consistent in size
- Eased edges for faster handling
- Structurally graded (C24) to European Standards EN14081-2
- Pressure Preservative Treated with Tanalith E to protect against insect attack and rot
- Environmentally certified
- Xtra Strong C24 at no Xtra cost
- Our 47 x 150 C24 Deckjoist is UC4 Treated and recommended for deck structures



Joistmate Timber

Code	Nom. size in mm	Available Lengths						
		2.4m	3.0m	3.6m	4.2m	4.8m	5.4m	6.0m
75225SCT	75 x 225mm					●	●	
75200SCT	75 x 200mm					●		
75150SCT	75 x 150mm				●		●	
75100SCT	75 x 100mm					●		
47250SCT	47 x 250mm					●		
47225SCT	47 x 225mm			●		●	●	●
47200SCT	47 x 200mm		●	●	●	●	●	●
47175SCT	47 x 175mm			●	●	●	●	●
47150SCT	47 x 150mm		●	●	●	<b>UC4*</b>	●	●
47125SCT	47 x 125mm			●		●		
47100SCT	47 x 100mm	●	●	●	●	●	●	●
4775SCT	47 x 75mm	●	●		●	●		

**\*We recommend our UC4 treated decking joist for ground contact applications.**

### What is UC4 Treated Timber?

There are 4 standards for timber treatment

**UC1** – Internal timbers no risk of getting wet

**UC2** – Internal timbers where there is a risk of wetting

**UC3** – External timbers used above ground

**UC4** – External timbers used in direct ground contact, in the ground or close contact with fresh water

## Other Treated Timbers

Code	Description	Lengths
1938SCT	19 x 38mm Sawn Treated	random
22100SCT	22 x 100mm Sawn Treated	4,8
22150SCT	22 x 150mm Sawn Treated	4,8
2275SCT	22 x 75mm Sawn Treated	4,8
2538SCT	25 x 38mm Sawn Pressure Treated Batten to BS 5534 (Certified Roof Battens)	random
2550SCT	25 x 50mm Sawn Pressure Treated Batten to BS 5534 (Certified Roof Battens)	random
3850SCT	38 x 50mm Nom. (35 x 45mm fin.) Eased Edge and Treated	4.2
4750SCT	47 x 50mm Nom. (45 x 45mm fin.) Regularised Eased Edge and Treated	2.4, 3.0, 4.2
100100SCT	100 x 100mm Nom. (95 x 95mm fin.) Eased Edge C24/C16 Graded and Treated	3.6, 4.8
3850SCTFTS	3 8 x 50 Sawn Treated (Full to size) Cladding Batten (Environmentally Certified)	random







# Landscaping Sleepers - Our sleepers are UC4 Treated

Our range of Selected Oak and Pressure treated sleepers are the ideal choice for raised beds or for creating steps and seating areas. All sleepers supplied are 2.4m long. As a natural product, each sleeper is unique. This means that there may be colour variations, splits, knots and waness.

Code	Description
100200SSTB24	Brown Treated Sawn Sleeper 100 x 200mm x 2.4m
125250SSCG24	Green Treated Sawn Sleeper 125 x 250mm (Nom.) x 2.4m
100200SCSTG24	Green Treated Smooth/Chamfered Sleeper 100mm x 200mm (Nom.) x 2.4m
1002000S	Untreated Rustic Oak Sawn Sleeper 100 x 200mm x 2.4m



What is UC4  
Treated Timber?  
See page 21



125250SSCG24



100200SSTB24



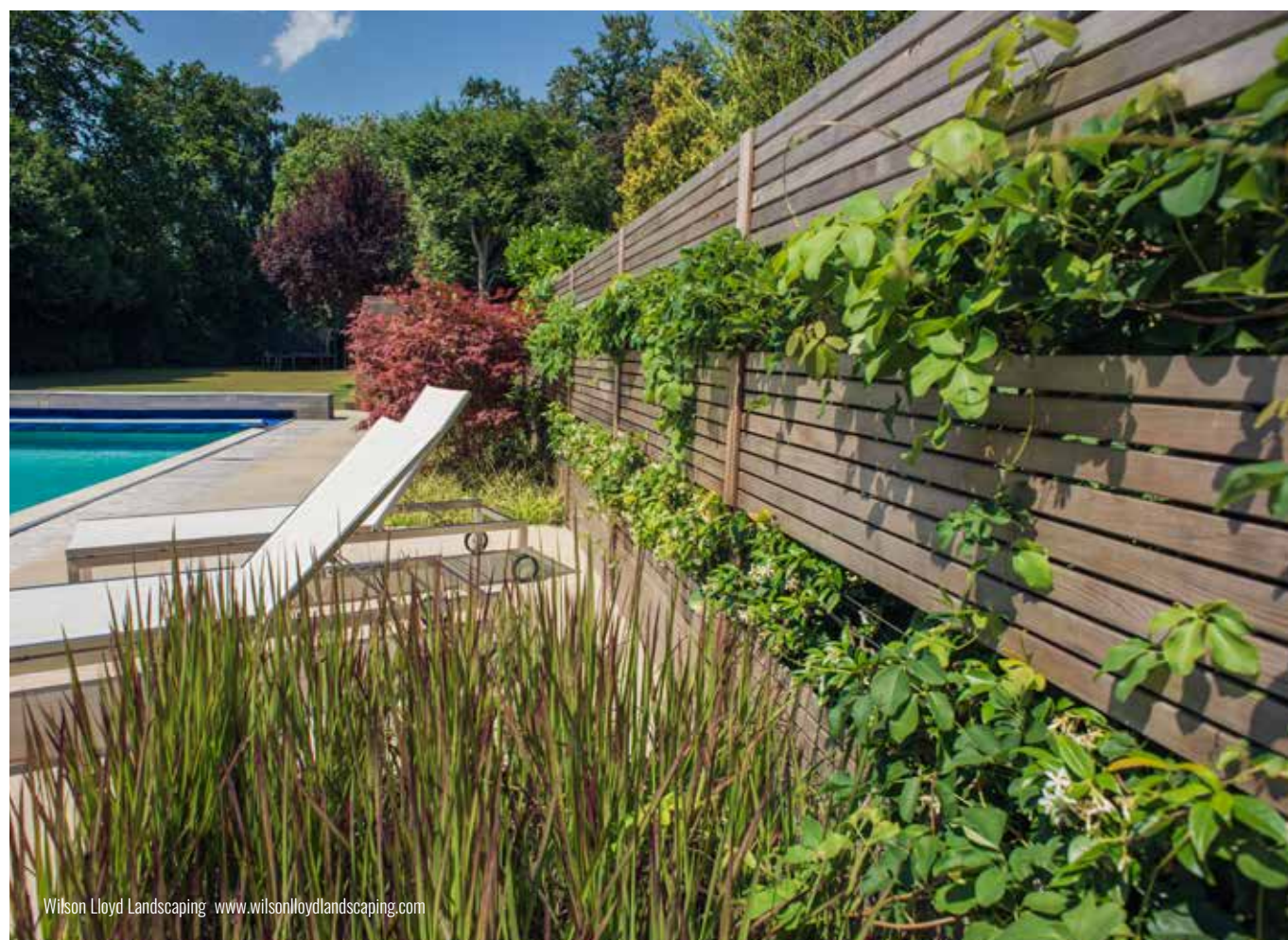
1002000S



100200SCSTG24









## Landscape Battens and Landscape Joinery

Comprehensive range of landscape battens for garden screen designs available in a selection of timbers. All our battens feature chamfered edges for a better design. Our Redwood battens are treated to UC4, suitable for ground contact. Our Cedar and Sapele battens are naturally resistant to rot and decay.

Product Code	Description
<b>Joinery quality Redwood pressure treated green to UC4</b>	
2550TC4E	20 x 44mm fin. Redwood UC4 Treated Landscape Batten Planed & Chamfered 4 Edges
2575TC4E	20 x 68mm fin. Redwood UC4 Treated Landscape Batten Planed & Chamfered 4 Edges
25100TC4E	20 x 94mm fin. Redwood UC4 Treated Landscape Batten Planed & Chamfered 4 Edges
25150TC4E	20 x 144mm Redwood UC4 Treated Landscape Joinery Planed & Chamfered 4 Edges
<b>Clear Grade Western Red Cedar</b>	
1950CC4E	14 x 44mm fin. Cedar Landscape Batten Planed & Chamfered 4 Edges
2550CC4E	19 x 44mm fin. Cedar Landscape Batten Planed & Chamfered 4 Edges
2575CC4E	19 x 68mm fin. Cedar Landscape Batten Planed & Chamfered 4 Edges
25100PC	19 x 94mm fin. Cedar Landscape Batten Planed & Chamfered 4 Edges
<b>Clear Grade Sapele Hardwood</b>	
2550SC4E	20 x 44mm fin. Sapele Landscape Batten Planed & Chamfered 4 Edges
<b>Thermo Radiata Pine</b>	
2550TRPC4E	20 x 44mm TRP Thermo Radiata Pine Landscape Batten Planed & Chamfered 4 Edges



2550TC4E



2550CC4E



2550SC4E



2575TC4E



2575CC4E



**What is UC4  
Treated Timber?**  
See page 21





# Landscapers Joinery Timber

Cedar, Sapele and Pressure Treated Joinery Redwood in square edge and TGV profiles. Ideal for constructing all garden features, buildings, gates and frames.

Code	Description
<b>Joinery quality Redwood pressure treated to UC4</b>	
25150TC4E	20 x 144mm fin. Treated Green UC4 Planed & Chamfered 4 Edges Landscapers Joinery
5050TC4E	44 x 44mm fin. Treated Green UC4 Planed & Chamfered 4 Edges Landscapers Joinery
5075TC4E	44 x 69mm fin. Treated Green UC4 Planed & Chamfered 4 Edges Landscapers Joinery
50100TC4E	44 x 94mm fin. Treated Green UC4 Planed & Chamfered 4 Edges Landscapers Joinery
7575TC4E	68 x 68mm fin. Treated Green UC4 Planed & Chamfered 4 Edges Landscapers Joinery
100100TC4E	94 x 94mm fin. Redwood UC4 Treated Landscape Joinery Planed & Chamfered 4 Edges
25125RTTGVDS	25 x 125mm Nom. (21 x 119mm fin.) Treated Redwood Joinery TGV Dual Sided
25125TRPTGVDS	25 x 125mm Nom. (18 x 115mm fin.) 105mm Face TRP Thermo Radiata Pine TGV Dual Sided
25150FRTPMVTG	25 x 150mm Nom. (18 x 144mm fin.) 124mm Face TRP Thermo Radiata Pine PMV T&G Channel
<b>Clear Grade Western Red Cedar</b>	
5050PC	50 x 50mm Nom. PAR Cedar
50100PC	50 x 100mm Nom. PAR Cedar
7575PC	75 x 75mm Nom. PAR Cedar
100100PC	100 x 100mm Nom. PAR Cedar
584CTGVP	16 x 100mm Nom. (12 x 94mm fin.) Western Red Cedar TGV
25150CTGVCC1	25 x 150mm Nom. (18 x 142mm fin.) Cedar TGV
<b>Clear Grade Sapele Hardwood</b>	
5050PS	50 x 50mm Nom. (44 x 44mm fin.) PAR Sapele
50100PS	50 x 100mm Nom. (44 x 94mm fin.) PAR Sapele
7575PS	75 x 75mm Nom. (70 x 70mm fin.) PAR Sapele
100100PS	100 x 100mm Nom. (94 x 94mm fin.) PAR Sapele
25125STGV	25 x 125mm Nom. (20 x 119mm fin.) Sapele TGV Dual Sided



50100TC4E



25125RTTGVDS



50100PC



25150CTGVCC1

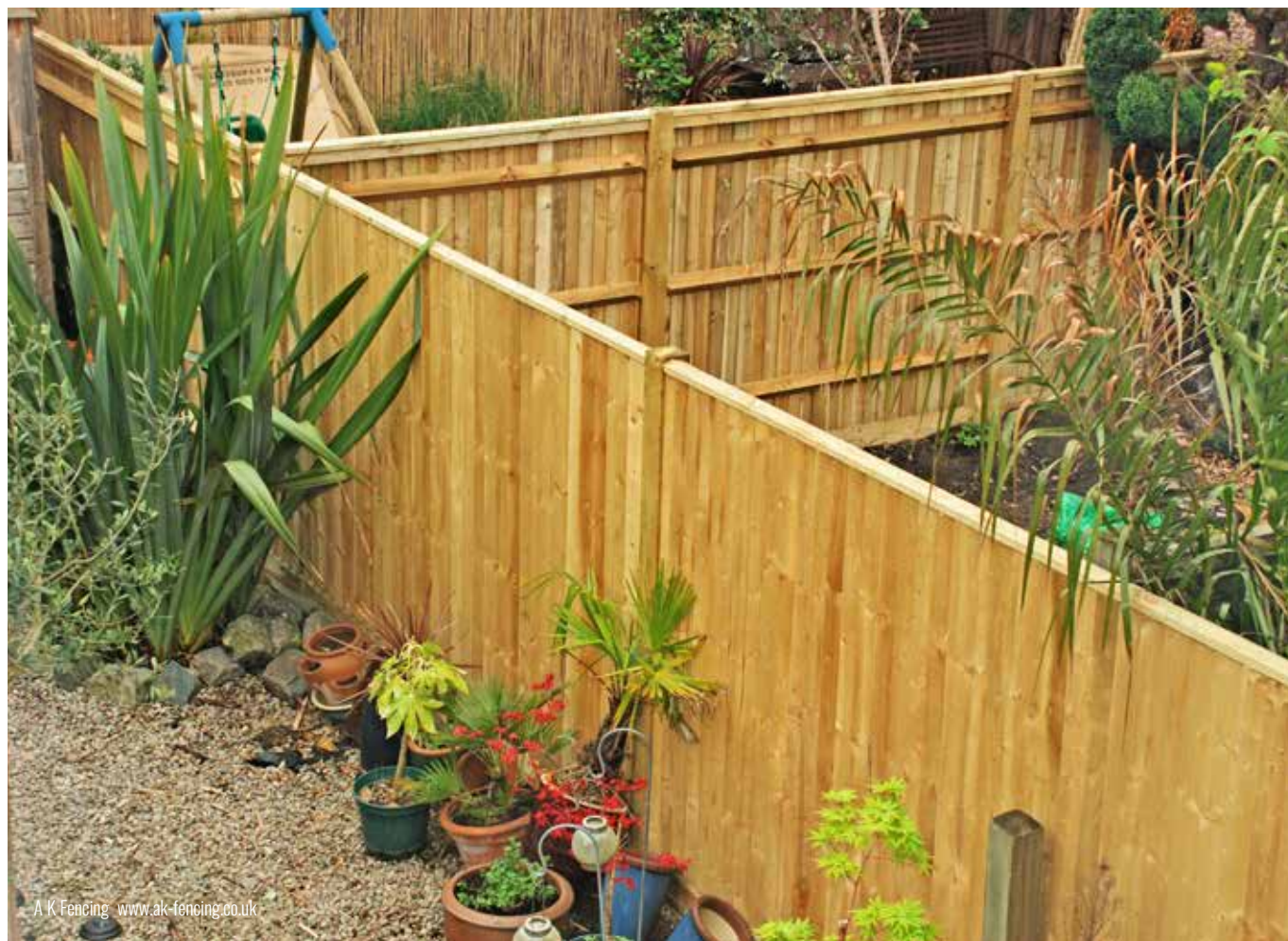


50100PS



25125STGV



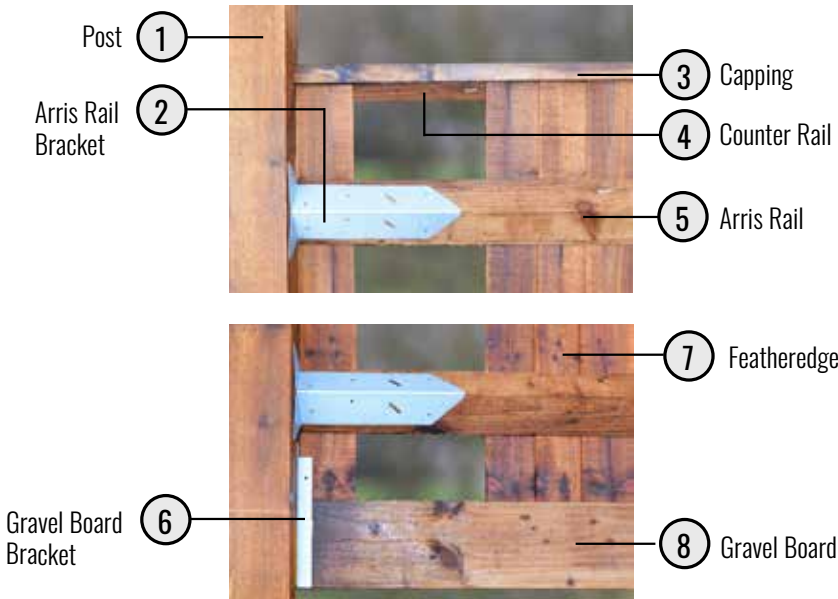
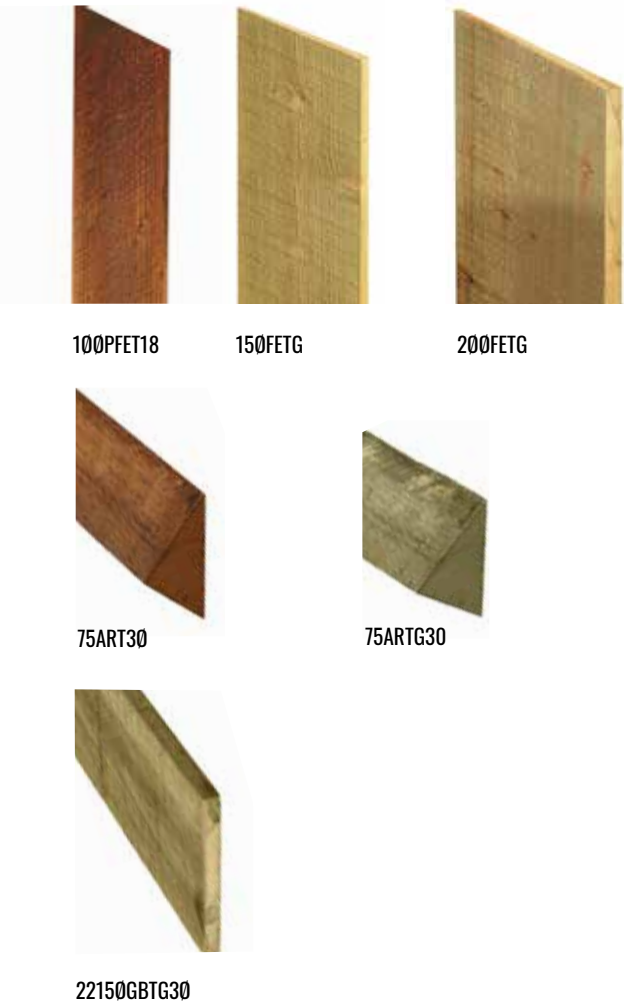




# Feather Edge Fencing

Pressure treated components to construct a strong, durable and attractive traditional fence.

Code	Description
125FETG18	125mm Feather Edge Green Treated 1.8m long
100PFET15	100mm Feather Edge Premium Grade Brown Treated, 1.5m long
100PFET165	100mm Feather Edge Premium Grade Brown Treated, 1.65m long
100PFET18	100mm Feather Edge Premium Grade Brown Treated, 1.8m long
<b>Arris Rails and Capping</b>	
75ARTG30	75mm Treated Arris Rail 3.0m Long Green
75ART30	75mm Treated Arris Rail 3.0m Long Brown
3863FCT30	Feather Edge Capping 38 x 63mm 3.0m (Brown)
3250TRT30	Feather Edge Counter/Top Rail 32 x 50mm 3.0m (Brown)
ARB	Arris Rail Bracket 12" Galvanised
ARBEB12	Arris Rail Bracket Epoxy Brown 12"
MAB	Mortice Adaptor Bracket
MC25	Type 25 Galv. Metclip (for 22/25mm Gravel Board)
<b>Gravel Boards</b>	
22150GBTG30	22 x 150mm Treated Gravel Board 3.0m Green
22150GBT30	22 x 150mm Treated Gravel Board 3.0m Brown
22150GBT183	22 x 150mm Treated Gravel Board 1.83m Brown
28150GBSP183	28 x 150mm Jackson Gravel Board 1.83m for Slatted Posts (Jalcured to UC4)









# Traditional Fence Panels

All panels treated for a longer service life.

**Overlap** - Lap panel with strong batons and rebated frame for extra strength.

**Closeboard** - Feather edge panels are manufactured with 100mm thick boards, heavy duty framing and support

**Meloir** - Horizontal timber slats and wave top lattice are planed, rounded and grooved and fixed into a strong rebated frame.

**Lille** - Features straight cut slats that are smooth, with horizontal style trellis top and constructed using a fully Mortise and Tenon jointed frame.

**Atcham** - Heavyweight panel with added feature of a horizontal style trellis top.

**Contemporary** - Double sided and uses horizontal boards offering maximum privacy.

**Vogue** - Constructed with a fully Mortise and Tenon jointed frame, planed and rounded slats on both sides for ultimate privacy.

**Budget** - Superior framework and flat cut boarding.

Code	Description	(h) = Height in mm
630	Overlap Panel 900 (h) x 1830mm Golden Brown	
640	Overlap Panel 1200 (h) x 1830mm Golden Brown	
650	Overlap Panel 1500 (h) x 1830mm Golden Brown	
660	Overlap Panel 1800 (h) x 1830mm Golden Brown	
63CB	Closeboard Feather Edge Panel 900 (h) x 1830mm Dark Brown	
64CB	Closeboard Feather Edge Panel 1200 (h) x 1830mm Dark Brown	
65CB	Closeboard Feather Edge Panel 1500 (h) x 1830mm Dark Brown	
66CB	Closeboard Feather Edge Panel 1800 (h) x 1830mm Dark Brown	
65CBG	Closeboard Feather Edge Panel 1500 (h) x 1830mm Green	
66CBG	Closeboard Feather Edge Panel 1800 (h) x 1830mm Green	
66BCPHGB	Budget Closeboard Panel 1800mm (h) x 1830mm High Golden Brown	
65BCPHGB	Budget Closeboard Panel 1500mm (h) x 1830mm High Golden Brown	
64BCPHGB	Budget Closeboard Panel 1200mm (h) x 1830mm High Golden Brown	
66ELP	Elite Lille Panel 1800 (h) x 1800mm	
63EMP	Elite Meloir Panel 900 (h) x 1800mm	
635EMP	Elite Meloir Panel 1050 (h) x 1800mm	
65EMP	Elite Meloir Panel 1500 (h) x 1800mm	
66EMP	Elite Meloir Panel 1800 (h) x 1800mm	
1818CP	Contemporary Fence Panel 1800 x 1800mm	



Overlap Golden Brown



Closeboard Dark Brown



Closeboard Green



Lille



Meloir



Vogue



Contemporary



Budget Closeboard







Jackson Chilham Range



Jackson Venetian Hit & Miss



# Modern Fence Panels

**Chilham Range** - Double sided fence panel has a unique 'panelled' appearance due to its framed construction from Jakcure® treated softwood, using a unique interlocking grooved board system, with stainless steel fixings.

**Venetian Hit & Miss** – Horizontal slats both sides to allow air and light to pass through.

**Venetian** - Constructed from Jakcure® treated softwood planed slats for a premium finish within a framed system and stainless steel fixings.

**Vertical Hit & Miss** - Constructed from Jakcure® treated softwood planed slats for a premium finish. The slatted panel design has an approx. 15% wind load reduction as the gaps between the pales allows air to pass through.

**Vertical Tongue & Groove** – Constructed from Jakcure® softwood timber with mortice and tenon jointed frame for extra strength with stainless steel fixings.

Code	Description	(h) = Height in mm
63CP	Jackson Chilham Panel 910 (h) x 1830mm	
64CP	Jackson Chilham Panel 1220 (h) x 1830mm	
65CP	Jackson Chilham Panel 1520 (h) x 1830mm	
66CP	Jackson Chilham Panel 1830 (h) x 1830mm	
62VNHMP	Jackson Venetian Hit & Miss Panel 607 (h) x 1830mm	
63VNHMP	Jackson Venetian Hit & Miss Panel 907 (h) x 1830mm	
63VP	Jackson Venetian Panel 910 (h) x 1830mm	
64VP	Jackson Venetian Panel 1220 (h) x 1830mm	
65VP	Jackson Venetian Panel 1520 (h) x 1830mm	
66VP	Jackson Venetian Panel 1830 (h) x 1830mm	
63VHMP	Jackson Vertical Hit & Miss Panel 910 (h) x 1830mm	
64VHMP	Jackson Vertical Hit & Miss Panel 1220 (h) x 1830mm	
65VHMP	Jackson Vertical Hit & Miss Panel 1520 (h) x 1830mm	
66VHMP	Jackson Vertical Hit & Miss Panel 1830 (h) x 1830mm	
63VTGEP	Jackson Vertical T & G Effect Panel 910 (h) x 1830mm	
64VTGEP	Jackson Vertical T & G Effect Panel 1220 (h) x 1830mm	
65VTGEP	Jackson Vertical T & G Effect Panel 1520 (h) x 1830mm	
655VTGEP	Jackson Vertical T & G Effect Panel 1650 (h) x 1830mm	
66VTGEP	Jackson Vertical T & G Effect Panel 1830 (h) x 1830mm	
<b>Gravel Board</b>		
28150GBSP183	28 x 150mm Jackson Gravel Board 1.83m For Slotted Posts (Jakcured to UC4)	

## Posts

100100SCP21	100 x 100mm Jackson Slotted Corner Post 2.1m SYP (Jakcured to UC4)
100100SCP24	100 x 100mm Jackson Slotted Corner Post 2.4m SYP (Jakcured to UC4)
100100SCP27	100 x 100mm Jackson Slotted Corner Post 2.7m SYP (Jakcured to UC4)
100100SIP18	100 x 100mm Jackson Slotted INTER Post 1.8m SYP (Jakcured to UC4)
100100SIP21	100 x 100mm Jackson Slotted INTER Post 2.1m SYP (Jakcured to UC4)
100100SIP24	100 x 100mm Jackson Slotted INTER Post 2.4m SYP (Jakcured to UC4)
100100SIP27	100 x 100mm Jackson Slotted INTER Post 2.7m SYP (Jakcured to UC4)



# Jacksons Fencing

Jacksons Fence Panels



Jackson Vertical Hit & Miss



Jackson Venetian



Jackson Vertical Tongue & Groove



Jackson Gravel Board







# Lattice, Picket, Trellis Panels & Flower Walks

**Elite** - Planed, chamfered and grooved trellis with a sturdy 40mm rebated frame, 44mm lattice gap throughout.

**Lilleshall** - Planed and rounded lattice shaped trellis and a sturdy rebated frame, 20mm lattice gaps, ideal as a privacy screen.

**Adjustable** – Slats can be tilted to create privacy and allow for sunlight to reflect in different directions.

**Heavy Duty** - Robust frame ideal with smooth.

**Picket** - Durable planed timber.

**Feature Flower** - Contemporary design with stainless steel rods to create the shaping.

**20 Year  
Warranty**  
T&C's apply



Flower Circle



Heavy Duty



Picket



Lilleshall

Code	Description	(h) = Height in mm
<b>Lattice Panels</b>		
61RLPG	Elite Lattice Trellis 300 (h) x 1800mm	
62RLPG	Elite Lattice Trellis 600 (h) x 1800mm	
63RLPG	Elite Lattice Trellis 900 (h) x 1800mm	
64RLPG	Elite Lattice Trellis 1200 (h) x 1800mm	
66ELTGN	Elite Lattice Trellis 1800 x 1800mm	
61LLTGN	Lilleshall Lattice Trellis 300 (h) x 1800mm Green	
62LLTGN	Lilleshall Lattice Trellis 600 (h) x 1800mm Green	
63LLTGN	Lilleshall Lattice Trellis 900 (h) x 1800mm Green	
64LLTGN	Lilleshall Lattice Trellis 1200 (h) x 1800mm Green	
65LLTGN	Lilleshall Lattice Trellis 1500 (h) x 1800mm Green	
66LLTGN	Lilleshall Lattice Trellis 1800 (h) x 1800mm Green	

<b>Trellis Panels</b>		
61ST	Heavy Duty Square Trellis 300 (h) x 1830mm	
62ST	Heavy Duty Square Trellis 610 (h) x 1830mm	
63ST	Heavy Duty Square Trellis 900 (h) x 1830mm	
64ST	Heavy Duty Square Trellis 1200 (h) x 1830mm	
66ST	Heavy Duty Square Trellis 1810 (h) x 1830mm	

<b>Picket Fencing</b>		
63PPF	Picket / Pale Panel 900 (h) x 1800mm Green	
64RTP	Round Top Picket/Palisade 1200 x 1800mm	

<b>Flower Feature Structures</b>		
FLWRWL	Flower Walk	
FLWRWLBDB	Flower Walk (with Bolt Down Bracket)	
FLWRWLSPK	Flower Walk (with Spike for soft ground)	
FSF	Free Standing Flower Circle	



# Timber Posts

Our comprehensive range of pressure treated timber posts for fencing and decking treated to UC4.

We also have a range of reinforced concrete posts and gravel boards to suit panel fencing, and concrete spurs for timber posts.



**What is UC4  
Treated Timber?**  
See page 21



Product Code	Description
<b>Timber Posts – Sawn</b>	
757518	75 x 75mm Post 1.8m Redwood UC4 Treated Brown
757521	75 x 75mm Post 2.1m Redwood UC4 Treated Brown
757524	75 x 75mm Post 2.4m Redwood UC4 Treated Brown
757530	75 x 75mm Post 3.0m Redwood UC4 Treated Brown
10010018	100 x 100mm Post 1.8m Redwood UC4 Treated Brown
10010024	100 x 100mm Post 2.4m Redwood UC4 Treated Brown
10010030	100 x 100mm Post 3.0m Redwood UC4 Treated Brown
100100G24	100 x 100mm Post 2.4m Redwood UC4 Treated Green
15015030	150 x 150mm Post 3.0m Treated Green
<b>Timber Posts – Planed</b>	
7575RPG24	75 x 75mm Nom. PAR Post 2.4m Redwood UC4 Treated Green
100100RPG21	100 x 100mm Nom. PAR Post 2.1m Redwood UC4 Treated Green
100100RPG24	100 x 100mm Nom. PAR Post 2.4m Redwood UC4 Treated Green
100100RPG27	100 x 100mm Nom. PAR Post 2.7m Redwood UC4 Treated Green
100100RPG30	100 x 100mm Nom. PAR Post 3.0m Redwood UC4 Treated Green
100100RPG36	100 x 100mm Nom. PAR Post 3.6m Redwood UC4 Treated Green



757518



7575RPG24



15015030



100100RPG21

## Concrete Posts and Gravel Boards

Code	Description
<b>Concrete Posts, Gravel Boards</b>	
24LCSP	Slotted Concrete Post 87 x 100 x 2400mm
27LCSP	Slotted Concrete Post 87 x 100 x 2700mm
150LCGBR	Concrete Gravel Board 50 x 150 x 1830mm
305LCGBR	Concrete Gravel Board 50 x 300 x 1830mm
100SPUR	Concrete Spur 100 x 100mm x 1215mm



100100SCP27



100100SIP24



# External Claddings, Membranes and Fixings

Available in Sawn, Black Painted, Treated Redwood, Western Red Cedar, Sapele and Thermowood.

## Timber Cladding

Code	Description
32175EBBF	32 x 175mm Nom. Sawn Barn Black Feather Edge Cladding
25150RTRTC	25 x 150mm Nom. (18 x 145mm fin.) 135mm Face Treated Redwood Rebated Planed Face Tapered Cladding
25150RTPMV	25 x 150mm Nom. (18 x 144mm fin.) 124mm Face Treated Redwood PMV T&G Channel Cladding
25150CPMV	25 x 150mm Nom. (18 x 144mm fin.) 124mm Face Cedar PMV T&G Channel Cladding
25150CSLCC2	25 x 150mm Nom. (18 x 142mm fin.) 130mm Face Rebated Cedar Shiplap
25150CTGVCC1	25 x 150mm Nom. (18 x 142mm fin.) 129mm Face Cedar TGV Dual Sided
25125RTTGVDS	25 x 125mm Nom. (21 x 119mm fin.) 111mm Face UC4 Treated Redwood Joinery TGV Dual Sided
25125TRPTGVDS	25 x 125mm Nom. (18 x 115mm fin.) 105mm Face TRP Thermo Radiata Pine TGV Dual Sided
25150FRTPMVTG	25 x 150mm Nom. (18 x 144mm fin.) 124mm Face TRP Thermo Radiata Pine PMV T&G Channel
25125STGV	25 x 125mm Nom. (20 x 119mm fin.) 111mm Face Sapele TGV Dual Sided
25125TPMV	25 x 125mm Nom. (18 x 119mm fin.) 99mm Face Thermowood PMV T&G Channel Cladding
25100CTGV	25 x 100mm Nom. (18 x 94mm fin.) 84mm Face Western Red Cedar TGV Dual Sided
200FETG	200mm Treated Feather Edge Green (Ex 38 x 200)
150FETG	150mm Treated Feather Edge Green

## NEW Cladding

25100FFTGVDS	25 x 100mm Nom. (18 x 94mm fin.) 84mm Face Thermo Frake TGV Dual Sided
25150FRFPMVTG	25 x 150mm Nom. (18 x 144mm fin.) 124mm Face Thermo Frake PMV T&G Channel Cladding
25150FRGPMVTGCC	25 x 150mm Nom. (18 x 144mm fin.) 124mm Face Red Grandis PMV T&G Channel Cladding
3850SCTFTS	38 x 50 Sawn Treated (Full to size) Cladding Batten (Environmentally Certified)





# External Claddings, Membranes and Fixings



Millboard composite cladding is 100% wood-free, so it doesn't need sealing to prevent moisture ingress. Using a unique fibreglass reinforced resin-mineral composition, Millboard achieves the finest quality of finish, balanced with usability and maximum durability.

## Millboard Cladding

Code	Description
23750777	Millboard Envello+ Cladding Coloured Head Fixing Smoked Oak Box of 100
23784222	Millboard Envello+ Cladding Coloured Head Fixing limed Oak Box of 100
23758834	Millboard Envello+ Cladding Coloured Head Fixing Jarrah Box of 100
23718579	Millboard Envello+ Cladding Coloured Head Fixing Golden Oak Box of 100
23715516	Millboard Envello+ Cladding Coloured Head Fixing Burnt Cedar Box of 100
23702868	Millboard Envello+ Cladding Coloured Head Fixing Antique Oak Box of 100
5050MESLGOEC3	50 x 50 x 3050mm Millboard Envello Shadow Line Golden Oak External Corner
5025MEACPC30	50 x 25 x 3000mm Millboard Envello Aluminium Cladding Perforated Closure
23739963	3.5 x 30mm Millboard Envello Cladding S/Steel Fixing Screw (Box 250)
23767508	3.5 x 20mm Millboard Envello Cladding S/Steel Fixing Screw (Box 250)
26200MCB360D	26 x 200 x 3600mm Millboard Envello Board & Batten+ (Fire Rated) Smoked Oak Cladding
26200MCB360L	26 x 200 x 3600mm Millboard Envello Board & Batten+ (Fire Rated) Limed Oak Cladding

Code	Description
26200MCB360J	26 x 200 x 3600mm Millboard Envello Board & Batten+ (Fire Rated) Jarrah Cladding
26200MCB360G	26 x 200 x 3600mm Millboard Envello Board & Batten+ (Fire Rated) Golden Oak Cladding
26200MCB360R	26 x 200 x 3600mm Millboard Envello Board & Batten+ (Fire Rated) Burnt Cedar Cladding
26200MCB360A	26 x 200 x 3600mm Millboard Envello Board & Batten+ (Fire Rated) Antique Oak Cladding
18200MESLFRSO	18 x 200 x 3600mm, 181mm face Millboard Envello Shadow Line+ (Fire Rated) Smoked Oak Cladding
18200MESLFRLO	18 x 200 x 3600mm, 181mm face Millboard Envello Shadow Line+ (Fire Rated) Limed Oak Cladding
18200MESLFRGO	18 x 200 x 3600mm, 181mm face Millboard Envello Shadow Line+ (Fire Rated) Golden Oak Cladding
18200MESLFRBC	18 x 200 x 3600mm, 181mm face Millboard Envello Shadow Line+ (Fire Rated) Burnt Cedar Cladding
18200MESLFRAO	18 x 200 x 3600mm, 181mm face Millboard Envello Shadow Line+ (Fire Rated) Antique Oak Cladding
1025MEACVST25	13 x 25 x 2500mm Millboard Envello Aluminium Cladding Vertical Starter Trim
1025MEACHST25	10 x 25 x 2500mm Millboard Envello Aluminium Cladding Horizontal Starter Trim



We stock & supply Breathable Roof Membranes which allow your roof to breathe, whilst keeping out dust & are an essential part of modern roofing. Products from Ultraperm, Tyvek Supro Powerbond and Actis are stocked at your local branch.

## Membranes

Code	Description
1550ULUBM	Ultraperm Standard Universal BBA Breather Membrane 1.5m x 50m
1550UPUBM	Ultraperm Premium Universal BBA Breather Membrane 1.5m x 50m
1550TSBM	Tyvek Supra BBA Breather Membrane For Pitched Roof 1.5m x 50m
21517570	Tyvek Su pro BBA Breather Membrane For Pitched Roof 1.0m x 50m
14100THBM	Tyvek Housewrap BBA Breather Membrane For Walls 1.4m x 100m
21562648	Tyvek Firecurb BBA Housewrap Fire Retardant Breather Membrane 1.5m x 50m
21563348	Powerlon UV120 Breather Membrane Overlap Tape 60mm x 25m
FOBHWBM3050	Powerlon Flame Out FR Class B House Wrap Breather Membrane 3.0 x 50m
FOBHWBM1550	Powerlon Flame Out FR Class B House Wrap Breather Membrane 1.5 x 50m
21517082	Powerbond Single Sided Acrylic Breather Membrane Overlap Tape 60mm x 25m
52235HMF	Actis 35mm Hybrid Boost-R Multifoil Insulation with Breather Membrane 1.5 x 10.67m (16m2 Roll)
21353444	30mm Thinsulex TLX Gold Multi-Foil & Breather Membrane 1.2m x 10m
52235HMF	Actis 35mm Hybrid Boost-R Multifoil Insulation with Breather Membrane 1.5 x 10.67m (16m2 Roll)
100AIRT20	Actis Isodhesif Reflective Foil & Joint Tape 100mm x 25m Roll (For Hybrid/Hybris Range)



Ultraperm Standard



Ultraperm Premium



Powerbond Overlap Tape



# Gates

Timber gates and tongue and groove doors to compliment our fence panels and traditional timber fencing.

Code	Description
63CG	Closeboard Gate 1800 (h) x 900mm Brown
63CGG	Closeboard Gate 1800 (h) x 900mm Green
63NG	Norfolk Gate 1800 (h) x 900mm Green
63OG	Overlap Gate 1800 (h) x 900mm
11810BG	Jackson Brook Gate 1180 (h) x 1000mm inc fittings
14810BG	Jackson Brook Gate 1480 (h) x 1000mm inc fittings
17810BG	Jackson Brook Gate 1780 (h) x 1000mm inc fittings
178075BG	Jackson Brook Gate 1780 (h) x 750mm inc fittings
178090BG	Jackson Brook Gate 1780 (h) x 900mm inc fittings
19310BG	Jackson Brook Gate 1930 (h) x 1000mm inc fittings
63CVGGN	Contemporary Vogue Gate 1800 (h) x 900mm Green
63EMG	Elite Meloir Gate 1800 (h) x 900mm
17810VHMGLH	Jackson Hit & Miss Gates Vertical 1780 (h) x 1000mm Left Handed inc fittings
17810VHMGRH	Jackson Hit & Miss Gates Vertical 1780 (h) x 1000mm Right Handed inc fittings
17810VGLH	Jackson Venetian Gate Left Handed 1780 (h) x 1000mm inc fittings
17810VGRH	Jackson Venetian Gate Right Handed 1780 (h) x 1000mm inc fittings
21054327	1981 x 762 x 25mm Redwood Ledged & Braced Door
21038402	1981 x 762 x 44mm Redwood Framed, Ledged & Braced Door
21042515	1981 x 838 x 44mm Redwood Framed, Ledged & Braced Door
21046636	Redwood Gate 915 x 915 x 44mm



Norfolk Gate Green



Closeboard Gate Brown



Overlap Gate



Brook Gate



Ledged & Braced Redwood



Framed, Ledged & Braced Redwood



Contemporary Vogue Gate



Elite Meloir Gate



Jackson Hit & Miss Gates Vertical



Jackson Venetian Gate



Redwood Gate

# Accessories for Fencing and Gates

Our comprehensive range of Fencing accessories.

Code	Description
POSTMIX20	Postmix 20kg Bag
ARB	Arris Rail Bracket 12" Galvanised
ARBEB12	Arris Rail Bracket Epoxy Brown 12"
MAB	Mortice Adaptor Bracket
FPCB	Fence panel clip 47mm , easy fit – Brown.
MC44	Type 44 Galv. Metclip (for all panels & lattice)
MC25	Type 25 Galv. Metclip (for 22/25mm Gravel Board)
TC	Trellis Fixing Clip Galvanised
3125125SPFC	Flat Cap for slotted post 125mm x 125mm
33PC	Post Cap for 75 x 75mm Brown
44PC	Post Cap for 100 x 100mm Brown
33PCG	Post Cap for 75 x 75mm Green
44PCG	Post Cap for 100 x 100mm Green
PC	Panel Capping 1.83m
2218M	50 x 50 x 450mm Spike Post support
3324MG	75 x 75 x 600mm Spike Bolt Grip System 2 Post support
3330MG	75 x 75 x 750mm Spike Bolt Grip System 2 Post support
33BMG	75 x 75mm Bolt-down Bolt Grip System 2 Post support
33MT	Driving Tool for 75 x 75mm Post support
4430MG	100 x 100 x 750mm Spike Bolt Grip System 2 Post support
44BMG	100 x 100mm Bolt-down Bolt Grip System 2 Post support
44MT	Driving Tool for 100 x 100mm Post support



POSTMIX20

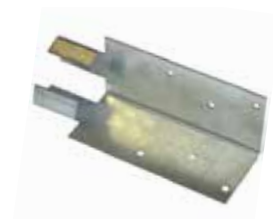
(Brand may vary from that shown)



ARB



ARBEB12



MAB



FPCB



MC25



MC44



PC



44PC



44BMG



4430MG



# Ironmongery



## Heavy Reversible Hinges

Ideal for gates and stable doors. Durable Heavy duty hinge with cast iron cups.

21884221 Heavy Reversible Hinges 1Pr 350mm (14")  
21875984 Heavy Reversible Hinges 1Pr 450mm (18")  
21849558 Heavy Reversible Hinges 1Pr 600mm (24")



## Zinc Plated Tee Hinge

Ideal for high use gates, sheds, stores and garden furniture.

- Manufactured from heavy gauge steel for strength and reliability
- Zinc plated finish for maximum rust resistance

21817403 300mm Medium Tee Hinge Zinc Plated (Pair)  
21804762 400mm Medium Tee Hinge Zinc Plated (Pair)  
21898433 450mm Medium Tee Hinge Zinc Plated (Pair)  
21835377 600mm Strong Tee Hinge Zinc Plated (Pair)



## Black Tee Hinge

Ideal for high use gates, sheds, stores and garden furniture.

- Manufactured from heavy gauge steel for strength and reliability
- Heavy black powder coating for maximum rust resistance

21873997 300mm Medium Tee Hinge Black (Pair)  
21877186 350mm Medium Tee Hinge Black (Pair)  
21812477 450mm Medium Tee Hinge Black (Pair)  
21877353 600mm Strong Tee Hinge Black (Pair)



## Light Tee Hinge

Ideal for use on stores and garden furniture where there is little weight. Black powder coated finish for resistance to rust and corrosion

21861512 200mm Light Tee Hinge Black (Pair)



## Stormproof Hinge

Bright Zinc Plating prevents corrosion.

21849008 64mm Stormproof Hinge Zinc Plated (Pair)

## L&B Gate Pack

Ideal for high use gates, sheds, stores and garden furniture.

- Complete with fixings
- Manufactured from heavy gauge steel for strength and reliability
- Heavy black powder coating or zinc plated finish for maximum rust resistance

21888328 L&B Door Pack Black Hinges, Bolts, Ring Latch, P.Lock  
21848117 L&B Door Pack Zinc Hinges, Bolts, Ring Latch, P.Lock





### Auto Gate Latch

Ideal for use with self closing hinges and latch automatically engages keeping the gate shut.

21863660 Auto Gate Latch BZP  
21877078 Auto Gate Latch Black



### Kenham Auto Gate Latch

The gate is held firmly shut by the sprung arm yet is easily pushed open allowing hands free operation. Ideal for a side gate to a house where the gate can be locked from the inside when required.

21890994 Kenham Auto Gate Catch (1825) BZP Galvanised



### Suffolk Latch

Ideal for gates, complete with fixings.

- Black powder coated or zinc plated finish for resistance to rust and corrosion.

21876028 Suffolk Latch (No.20) Size 2 Epoxy Black  
21870118 Suffolk Latch (No.20) Size 2 Zinc Plated



### Ring Gate Catch

Ideal for gates, complete with fixings.

- Black powder coated or zinc plated finish for resistance to rust and corrosion

21893667 Ring Gate Catch (1136) 6" Zinc Plated  
21855412 Ring Gate Latch (1136) 6" Epoxy Black



### Oval Padbolt

A space saving pad bolt includes fixings.

- Black powder coated or zinc plated finish for resistance to rust and corrosion

21896606 Oval Pad Bolt (4A) 4" ZP  
21870774 Oval Pad Bolt (4A) Epoxy Black



### Padbolt

Ideal for usage on sheds and gates, with fixings included.

- Black powder coated or zinc plated finish for resistance to rust and corrosion
- Black powder coated or zinc plated finish for resistance to rust and corrosion
- For use with padlocks (purchased separately)
- Can be installed horizontally and vertically

21898501 Padbolt (2A) 4" Epoxy Black  
21861017 Padbolt (2A) 4" ZP  
21851688 Padbolt (2A) 6" Epoxy Black  
21869051 Padbolt (2A) 6" ZP  
21877805 Padbolt (2A) 8" Epoxy Black  
21856907 Padbolt (2A) 8" ZP



### Tower Bolt Necked

Ideal for usage on sheds and gates, with fixings included.

- Black powder coated or zinc plated finish for resistance to rust and corrosion.

21833663 Tower Bolt - Necked (923AN) 4" Epoxy Black  
21851582 Tower Bolt - Necked (923AN) 4" Zinc Plated  
21881602 Tower Bolt - Necked (923AN) 6" Epoxy Black  
21873645 Tower Bolt - Necked (923AN) 6" Zinc Plated  
21877483 Tower Bolt - Necked (923AN) 8" Epoxy Black



### Tower Bolt Straight

Ideal for usage on sheds and gates, with fixings included.

- Black powder coated or zinc plated finish for resistance to rust and corrosion.

21822537 Tower Bolt - Straight (923A) 12" Epoxy Black  
21830846 Tower Bolt - Straight (923A) 4" Epoxy Black  
21895494 Tower Bolt - Straight (923A) 4" Zinc Plated  
21893964 Tower Bolt - Straight (923A) 6" Epoxy Black  
21888472 Tower Bolt - Straight (923A) 6" Zinc Plated  
21841897 Tower Bolt - Straight (923A) 8" Epoxy Black



### Monkey Tail Bolt

Used to secure the bottom of a door or gate to the floor.

- Black powder coated finish for resistance to rust and corrosion.

21894800 Monkey Tail Bolt 12" Epoxy Black



### Garage Door Bolt

Heavy duty bolt, black powder coated / zinc plated for resistance to rust and corrosion.

21883712 Garage Door Bolt (1260/H) 18" Black  
21824838 Garage Door Bolt (1260/H) 18" Zinc Plated



### Wire Hasp & Staple

Light duty used on pet enclosures, sheds etc.

21838965 Wire Hasp & Staple 3" Epoxy Black



### Safety Hasp & Staple

For use on sheds, gates etc.

- Black powder coated or zinc plated finish for resistance to rust and corrosion.

21847660 Safety Hasp & Staple (617) 4.5" Epoxy Black  
21846830 Safety Hasp & Staple (617) 4.5" Zinc Plated  
21898730 Safety Hasp & Staple (617) 6" Epoxy Black  
21841743 Safety Hasp & Staple (617) 6" Zinc Plated



### Malleable Locking Bar

Heavy duty for use on gates, sheds etc.

- Black powder coated or zinc plated finish for resistance to rust and corrosion.

21879647 Malleable Locking Bar (3420/3430) 12" Epoxy Black  
21853968 Malleable Locking Bar (3420/3430) 8" Epoxy Black  
21837133 Malleable Locking Bar (3420/3430) 8" Zinc Plated



### Heavy Duty Handle

Heavy duty handle ideal for outdoor use.

21867460 Chest Handle 4" Epoxy Black



### Door Spring

This gate spring provides a closing solution for lightweight external gates such as garden fencing gates or alleyway gates.

- Black powder coated zinc plated for resistance to rust and corrosion
- Smoother and automatic door closing function
- Spring tension is adjustable

21857218 Diecast Door Spring 254mm Black  
21842771 Door Spring 254mm Zinc Plated



### Cabin Hooks

Use to hold open gates etc.

21843075 Cabin Hooks (No.37) 12" Epoxy Black  
21866814 Cabin Hooks (No.37) 4" Epoxy Black  
21846342 Cabin Hooks (No.37) 4" Galvanised  
21858307 Cabin Hooks (No.37) 6" Epoxy Black  
21890710 Cabin Hooks (No.37) 6" Galvanised  
21857539 Cabin Hooks (No.37) 8" Epoxy Black



# Deck and Fence Treatments

A full range of finishes to enhance and protect your project.

## Decking Oil



Cedar

Teak



Oak

Natural

Code	Description
23217843	Ronseal Ultimate Decking Oil Natural 5L
23224957	Ronseal Ultimate Decking Oil Natural Cedar 5L
23276130	Ronseal Ultimate Decking Oil Natural Oak 5L
23278295	Ronseal Ultimate Decking Oil Teak 5L



23293557	Liberon Decking Oil 2.5litre Clear
----------	------------------------------------

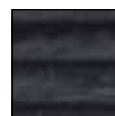
## Decking Stain



Cedar



Charcoal



Country Oak



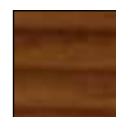
Dark Oak



Medium Oak



Rich Mahogany



Rich Teak



Slate



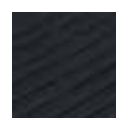
Stone Grey

23286269	Ronseal Ultimate Decking Stain Cedar 2.5L
23292598	Ronseal Ultimate Decking Stain Charcoal 2.5L
23292383	Ronseal Ultimate Decking Stain Country Oak 2.5L
23296046	Ronseal Ultimate Decking Stain Dark Oak 2.5L
23267091	Ronseal Ultimate Decking Stain Medium Oak 2.5L
23257061	Ronseal Ultimate Decking Stain Rich Mahogany 2.5L
23274716	Ronseal Ultimate Decking Stain Rich Teak 2.5L
23272828	Ronseal Ultimate Decking Stain Slate 2.5L
23268623	Ronseal Ultimate Decking Stain Stone Grey 2.5L

## Decking Restorer, Preserver and Protector



23241596	Ronseal Decking Restorer 2.5ltr
23227422	Ronseal Decking End Grain Preserver 750ml
23286764	Ronseal Decking Protector 5ltr Natural
21206375	Jakure End Grain Treatment 500ml



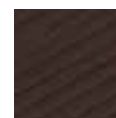
Charcoal



Chestnut



Slate



English Oak

23272095	Ronseal Decking Rescue Paint Charcoal 2.5L
23257030	Ronseal Decking Rescue Paint Chestnut 2.5L
23231887	Ronseal Decking Rescue Paint English Oak 2.5L
23245631	Ronseal Decking Rescue Paint Slate 2.5L

Note: colour swatches shown are an indication only of actual product colours.

## Fence Protection



Dark Oak



Forest Green



Harvest Gold



Medium Oak



Tudor Black Oak

23238152	Ronseal One Coat Fencelife Dark Oak 5ltr
23278479	Ronseal One Coat Fencelife Forest Green 5ltr
23203044	Ronseal One Coat Fencelife Harvest Gold 5ltr
23279063	Ronseal One Coat Fencelife Medium Oak 5ltr
23204973	Ronseal One Coat Fencelife Tudor Black Oak 5ltr

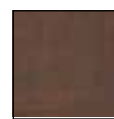
## Wood Preserver and Treatment



Autumn Brown



Black



Dark Brown



Green



Light Brown

23257184	Ronseal Shed & Fence Preserver 5ltr Autumn Brown
23234963	Ronseal Shed & Fence Preserver 5ltr Black
23211872	Ronseal Shed & Fence Preserver 5ltr Dark Brown
23289024	Ronseal Shed & Fence Preserver 5ltr Green
23203952	Ronseal Shed & Fence Preserver 5ltr Light Brown



Dark Oak



Country Oak



Medium Oak

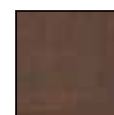


Tudor Black Oak

23281745	Ronseal 5 Year Fencelife Plus Country Oak 5L
23220447	Ronseal 5 Year Fencelife Plus Dark Oak 5L
23278394	Ronseal 5 Year Fencelife Plus Medium Oak 5L
23251335	Ronseal 5 Year Fencelife Plus Tudor Black Oak 5L

## Sprayers and Brushes

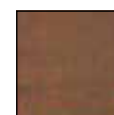
23248304	Ronseal Precision Finish Fence Sprayer For use with either One Coat Fencelife or Fencelife Plus
23252868	Ronseal Shed, Fence & Deck brush



Dark Brown



Green



Light Brown

23246898	Ronseal Total Wood Preserver 2.5ltr Clear
23244771	Ronseal Total Wood Preserver 5ltr Clear
23200074	Ronseal Total Wood Preserver 2.5ltr Dark Brown
23291515	Ronseal Total Wood Preserver 2.5ltr Green
23262522	Ronseal Total Wood Preserver 2.5ltr Light Brown



23296367	Ronseal Multi Purpose Wood Treatment 2.5litre
23234833	Ronseal Multi Purpose Wood Treatment 5 litre



23266418	Creosote Substitute - Dark 4 litre
23276707	Creosote Substitute - Light 4 litre

Note: colour swatches shown are an indication only of actual product colours.



## Wood Stain

### Ronseal Woodstain

- 10 Year Woodstain Protection
- No need for a basecoat or Primer
- Won't peel or flake
- Rainproof in 1 hour



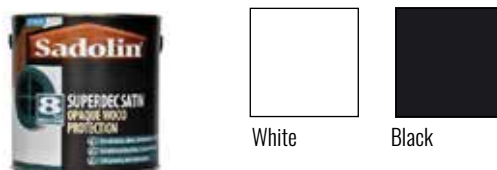
23207462	Ronseal BBA 10 year Woodstain 2.5ltr Antique Pine
23209800	Ronseal BBA 10 year Woodstain 2.5ltr Black Ebony
23221543	Ronseal BBA 10 year Woodstain 2.5ltr Dark Oak
23253988	Ronseal BBA 10 year Woodstain 2.5ltr Deep Mahogany
23220874	Ronseal BBA 10 year Woodstain 2.5ltr Natural Oak
23263451	Ronseal BBA 10 year Woodstain 2.5ltr Walnut
23272101	Ronseal BBA 10 year Woodstain 750ml Antique Pine
23217485	Ronseal BBA 10 year Woodstain 750ml Black Ebony
23227705	Ronseal BBA 10 year Woodstain 750ml Dark Oak
23293663	Ronseal BBA 10 year Woodstain 750ml Deep Mahogany
23201279	Ronseal BBA 10 year Woodstain 750ml Natural Oak
23293335	Ronseal BBA 10 year Woodstain 750ml Walnut



23250925	Ronseal Quick Drying Woodstain Satin 2.5ltr Dark Oak
23234796	Ronseal Quick Drying Woodstain Satin 2.5ltr Walnut
23297784	Ronseal Quick Drying Woodstain Satin 750ml Dark Oak
23261853	Ronseal Quick Drying Woodstain Satin 750ml Walnut

### Sadolin Superdec

- 10 Years Protection
- Self-priming
- Water Based
- Ideal for:
- Wood, Weathered Plastic, Steel, Cladding, Concrete, Masonry, External Doors and Joinery
- Resists Cracking, Peeling and flaking
- Touch dry 4-6 hours



23284128	Sadolin Superdec Satin Super White 1litre
23242777	Sadolin Superdec Satin Super White 2.5litre
23200876	Sadolin Superdec Satin Super White 5litre
23283893	Sadolin Superdec Satin Black 1litre
23216549	Sadolin Superdec Satin Black 2.5litre
23272323	Sadolin Superdec Satin Black 5litre

### Sadolin Classic

- Versatile All-purpose woodstain
- Internal and External
- Ideal for Decking, Fencing, Cladding
- Can be used as a base on new wood
- Touch Dry: 4-6 hours
- Re-coat: 16-24 hours



23248052	Sadolin Classic 3 Teak 1litre
23234734	Sadolin Classic 3 Teak 2.5litre
23252745	Sadolin Classic 4 Jacobean Walnut 1litre
23222373	Sadolin Classic 4 Jacobean Walnut 2.5litre
23244429	Sadolin Classic 5 Ebony 1litre
23295810	Sadolin Classic 5 Ebony 2.5litre
23254428	Sadolin Classic Light Oak 1litres
23244634	Sadolin Classic Light Oak 2.5litres

Note: colour swatches shown are an indication only of actual product colours.

### Sadolin Extra Woodstain

- Resists flaking, peeling and blistering
- Durable and hard wearing
- 2 coats required
- On new wood use Sadolin Classic as a base coat.
- Touch dry 4-6 hours. Recoat 16-24 hours.



Teak



Ebony



Light Oak

23299887	Sadolin Extra 3 Teak 1litre
23251274	Sadolin Extra 3 Teak 2.5litre
23265134	Sadolin Extra 5 Ebony 1litre
23265028	Sadolin Extra 5 Ebony 2.5litre
23248607	Sadolin Extra Light Oak 1litre
23260665	Sadolin Extra Light Oak 2.5litres

### OSMO



23239630	Osmo 8021 Polymer Composite Cleaner 1L
23215214	Osmo 6609D Wood Reviver Power Gel with Decking Cleaning Brush 2.5L
23291553	Osmo 432D UV-Protection-Oil Tints Light Oak 2.5L
23208698	Osmo 432C UV-Protection-Oil Tints Light Oak 0.75L
23229624	Osmo 431D UV-Protection-Oil Tints Light Red Cedar 2.5L
23244672	Osmo 431C UV-Protection-Oil Tints Light Red Cedar 0.75L
23222786	Osmo 430D Decking-Oil Anti-Slip Clear (Topcoat) 2.5L
23223110	Osmo 4290 UV-Protection-Oil Tints Natural 2.5L

23254343	Osmo 429C UV-Protection-Oil Tints Natural 0.75L
23205109	Osmo 4260 UV-Protection-Oil Tints Larch 2.5L
23206441	Osmo 426C UV-Protection-Oil Tints Larch 0.75L
23287709	Osmo 4240 UV-Protection-Oil Tints Spruce 2.5L
23283183	Osmo 424C UV-Protection-Oil Tints Spruce 0.75L
23211124	Osmo 420D UV-Protection-Oil Extra Clear Satin 2.5L
23205949	Osmo 420C UV-Protection-Oil Extra Clear Satin 0.75L
23229891	Osmo 3262D Polyx-Oil Rapid Clear Matt 2.5L
23254626	Osmo 3262C Polyx-Oil Rapid Clear Matt 0.75L
23269897	Osmo 3232D Polyx-Oil Rapid Clear Satin 2.5L
23226661	Osmo 3232C Polyx-Oil Rapid Clear Satin 0.75L
23266223	Osmo 3089C Polyx-Oil Anti-Slip Extra Clear Satin (R11) 0.75L
23209312	Osmo 3088C Polyx-Oil Anti-Slip Clear Semi-Matt (R9) 0.75L
23224872	Osmo 3062D Polyx-Oil Original Clear Matt 2.5L
23266681	Osmo 3062C Polyx-Oil Original Clear Matt 0.75L
23290112	Osmo 3060 Door Oil Clear Satin 1L
23267213	Osmo 3058 TopOil Clear Matt 0.5L
23215504	Osmo 3044D Polyx-Oil Effect Raw 2.5L
23210783	Osmo 3044C Polyx-Oil Effect Raw 0.75L
23250802	Osmo 3040D Polyx-Oil Tints White 2.5L
23254046	Osmo 3040C Polyx-Oil Tints White 0.75L
23282735	Osmo 3033 Door Oil Raw Matt 1L
23239982	Osmo 3032D Polyx-Oil Original Clear Satin 2.5L
23281844	Osmo 3032C Polyx-Oil Original Clear Satin 0.75L
23280809	Osmo 3028 TopOil Clear Satin 0.5L
23282018	Osmo 0160 Decking-Oil Bangkirai Dark 2.5L
23218062	Osmo 0140 Decking-Oil Massaranduba 2.5L
23280250	Osmo 013D Decking-Oil Garapa 2.5L
23299740	Osmo 0100 Decking-Oil Thermowood 2.5L
23293717	Osmo 007D Decking-Oil Teak (Clear) 2.5L
23214460	Osmo 006D Decking-Oil Bangkirai 2.5L

Note: colour swatches shown are an indication only of actual product colours.



## Garden Paint

- Very versatile
- Can be used on Wood, Brick, Terracotta and Metal
- Water based
- Rainproof in 1 hour
- Lasts up to 5 years

23200494 Ronseal Garden Paint Cool Breeze 2.5L

23206939 Ronseal Garden Paint Cornflower 2.5L

23253407 Ronseal Garden Paint Sage 2.5L

23230521 Ronseal Garden Paint Slate 2.5L

23258105 Ronseal Garden Paint White Ash 2.5L

23277908 Ronseal Garden Paint Willow 2.5L



Breeze



Cornflower



Sage



Slate



White Ash



Willow



Note: colour swatches shown are an indication only of actual product colours.

## Services

# Unrivalled range, quality and service.

### Unrivalled range

A massive range of timber always in stock and the largest range of timber mouldings in the South East.

### Unrivalled quality

Premium quality redwood used for PAR and mouldings. Machining service available to our exacting standards.

### Unrivalled service

Free delivery service. Excellent customer service through investment in staff training.

### With our custom profile matching service you can have precisely the profile and size you need.

Whether it's matching an existing profile or creating a custom profile design not available from Champion, we can help.

Using the latest technology in our Edenbridge Mill, all we need is either a sample of the profile to be matched, or a drawing with precise measurements so we can manufacture an exact match.

We can also tailor any of our stock profiles to suit your precise measurements.

It has never been easier to create a bespoke profile which can be co-ordinated across all your requirements including skirting, architraves, door frames, dado rail, picture rail, shelving and window boards.

We can produce your moulding, the minimum order is 1.8m, within 4 working days.

Simply speak to your local Champion branch for details.

## We make it easy for you to buy

To obtain an estimate or to place an order there are four easy options:

**1 Visit** your local branch, we're ready to serve you.

**2 Telephone** your local branch, we're ready for your call.

**3 Email** your local branch with your request or order

**4 Online** at: [www.championtimber.com](http://www.championtimber.com)

If you are a bona fide trade account customer, register and log in to our Website for your trade prices, order tracking and history.

For branch details see the back page.





# Specified items for Garden Design

Through our own milling facilities and partners, we can supply bespoke square sections and mouldings in a comprehensive range of hardwoods, specialist softwoods and pressure treated items to suit the most demanding garden designs and applications.

The following is a guide to species, their properties and options we can offer:

Specie	Durability	Grades	Other options	Typical landscaping end use
European Oak ( <i>Quercus robur</i> )	Durable	Clear / Beam / natural (knotty and defect) Limited stress grading	Fresh sawn (wet) Air Dried (5 – 7 years) Kiln dried (internal use only).	Pergolas / benches / beams/ Pretaining walls / posts / sleepers / planters. Constructional large sections and long lengths.
Siberian & European European Larch ( <i>Larix sibirica</i> / <i>euroaea</i> )	Moderately Durable	Clear / sawfalling (knotty)	Generally kiln dried - some air dried in larger sections Sap free options available	Landscape battens / cladding exterior joinery
Western Red Cedar ( <i>Thuja plicata</i> )	Durable	Normally clear Post Grade (knotty)	Some UK sawfalling (knotty) available Air dried for most applications - Kiln dried available Grading to C18 Sap free options available	Landscape battens / cladding / decking / balustrading / posts
Douglas fir ( <i>Pseudotsuga menziesii</i> )	Moderately Durable	Clear and sawfalling (knotty)	Kiln dried for joinery / cladding. Fresh sawn for constructional Stress grading available C16 & C24	Joinery and cladding. Large sections and very long lengths for constructional use
Iroko ( <i>Chlorophora exelsa</i> )	Durable	Clear	Mostly kiln dried	Joinery / battens / posts decking
Sapele ( <i>Entandrophragma cylindricum</i> )	Moderately durable	Clear	Kiln dried	Joinery / battens / posts / decking
Balau ( <i>Shorea</i> )	Very durable	Clear	Air dried	Decking / posts / large sections for constructional use. Installations around ponds and lakes / bridges
Teak ( <i>Tectona grandis</i> )	Very durable	Clear	Air dried	Decking. Joinery. Plantation grown. Generally smaller dimensions and short lengths only.
European Redwood ( <i>Pinus sylvestris</i> )	Slightly Durable	Clear	Kiln dried Pressure treated for external use in Classes UC3 and UC4. Decking has additional wax treatment. Some pre-finished options.	Decking. Joinery. Battens, Cladding. Planters.

If you have a particular specification or application please contact our sales department who would be happy to quote.

## What is UC4 Treated Timber?

There are 4 standards for timber treatment

**UC1** – Internal timbers no risk of getting wet

**UC2** – Internal timbers where there is a risk of wetting

**UC3** – External timbers used above ground

**UC4** – External timbers used in direct ground contact, in the ground or close contact with fresh water



# Installation Recommendations

## Storage

It is important you have an area to store your timber decking, fencing and landscaping materials before and during construction. Although the products are to be used outside, they should not be exposed to heavy rainfall or strong sunlight until installed. This will prevent the timber swelling or shrinking. All materials should be stacked on bearers that are clear of wet areas and should allow air to circulate between the products. Cover over with a waterproof material.

## Decking

### Planning Permission & building regulations

Generally, most decks in a domestic situation do not require planning permission however, it is the property owner's responsibility to check whether planning or building consent is required before work starts. Situations where planning and building regulations may be required are where:

- the deck platform is more than 300mm above the ground
- the deck is visible within 20 metres of a highway
- the deck is likely to exceed more than 50% of the property's garden
- the deck is in a conservation area, national park or attached to a listed building or is likely to have a detrimental effect on a neighbouring property

For decks up to 600mm above ground, handrails should be set at a minimum of 900mm. For decks over 600mm handrail height increases to 1100mm. In both cases, balustrading should be constructed so that a 100mm sphere cannot be passed through any part.

### Construction

Where constructing a deck against a wall of a building, an air gap of at least 10mm should be left to ensure the timber is not in direct contact with the brickwork or render. There should be no obstruction of airbricks and all fixings must be below the level of the DPC.

For ground contact applications we recommend our UC4 treated decking joist (see page 21.)

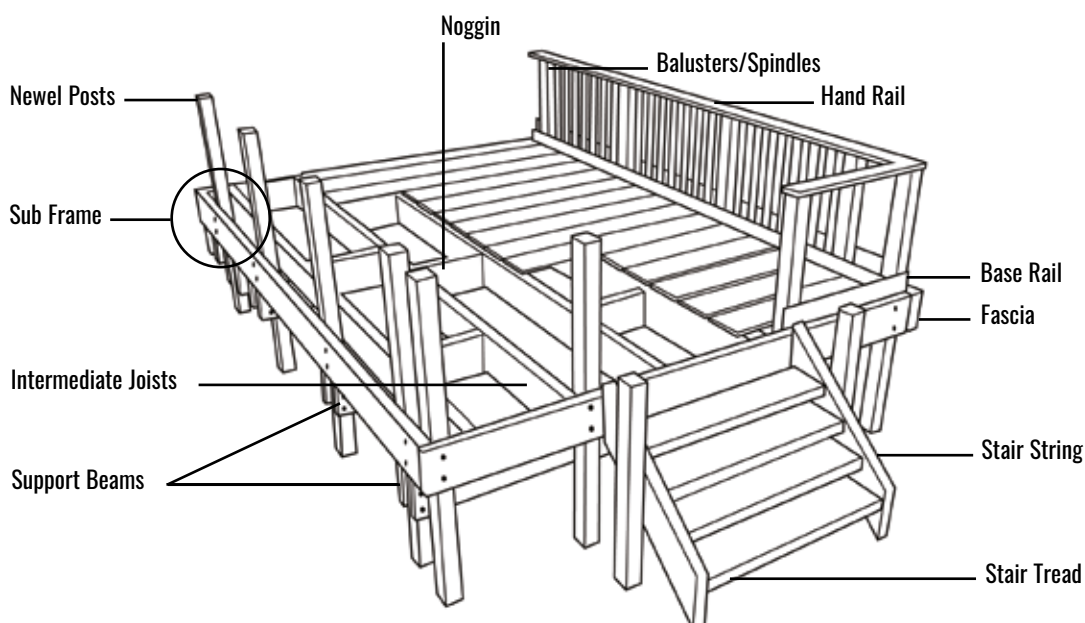
For beams and joists, not in ground contact, use our Joistmate Xtra (see page 21). These can be supported to ground contact using Champion timber posts which are treated to class UC4 for this purpose (see page 36).

**Pressure treatment does not permeate throughout the timber so it is essential that, when cross cut, ALL cut ends of timber are treated with a suitable end grain or timber preservative (see page 45). Treated redwood decking also requires end grain preservative after cutting.**

Joists should be installed with an approx gradient of between 2mm (min) and 10mm in every metre. The fall should be away from any building the deck is attached to and where groove decking is being used should be in the direction of the grooves.

We recommend that on completion of the supporting structure that all joists and supports are coated with a timber preservative.

A typical deck construction would look like this:





### Joist Spans using Champion Joistmate Xtra C24 Graded to EN14081-2

The following is a guide to recommended spans using Joistmate Xtra. Spans are based on installation at 400mm centres, a permanent load of up to 50Kg/m<sup>2</sup> and imposed load up to 150Kg/m<sup>2</sup>.

Spans and joist centres should be reduced if either the whole deck or any part will be subject to a higher load e.g. high footfall / planters / heavy furniture / BBQ installations. If in any doubt of the loading, please consult a professional installer or qualified structural engineer.

Champion Code	Finished Size (mm)	Max Span (m)
47100SCT	45 x 95	2.05
47150SCT	45 x 145	3.22
47200SCT	45 x 195	4.31

Source: TRADA Timber research and development association. [www.trada.co.uk](http://www.trada.co.uk)

### Fixing the deck boards

The following table shows the recommendations for fixing each type of decking we supply.

Please note: Joist centres indicated are for normal residential decks. For all domestic bridges, steps and boards laid at angles, this should be reduced by 50%.

For commercial applications, please consult with a structural engineer.

Type and codes	Joist Centres Max	Perimeter Space	Board Spacing	Fixings	Pilot Holes	Fixing Position	Fixing Detail	Suitable For Clip Fixing	Suitable For Camo Hidden Fixing
Redwood Treated 32125RDGS 32125ASTD 38150RDGR	400 mm	10mm	5mm	4.5 x 65 coated or stainless	Recommended	Min 15mm from end and 20mm from each edge	2 per joist through face	No	Yes
Hardwood 22100BD	400 mm	10mm	4mm	4.5 x 50 coated or stainless	Essential	Min 15mm from end and 20mm from each edge	2 per joist through face	No	Yes
Hardwood 25150BD 25150HDS 25150ASHD	400 mm	10mm	6mm	4.5 x 65 coated or stainless	Essential	Min 15mm from end and 20mm from each edge	2 per joist through face	No	Yes
Hardwood 32150BD	600 mm	10mm	6mm	4.5 x 65 coated or stainless	Essential	Min 15mm from end and 20mm from each edge	2 per joist through face	No	Yes
Ecodek 21136EHBS36 21136EHCP36 21136EHPM36 21136EHWS36	400mm 400mm 400mm 400mm	20mm 20mm 20mm 20mm	Minimum 5mm (increase this to 10mm for hot, humid, damp or poorly ventilated areas)	23786189 23753495 23753495 23789852	Essential	Min 20mm from end and edge	N/A	No	No
MillBoard 32176MAOD36 32176MBBD36 32176MBC36 32176MCD36 32176MGOD36 32176MJD36 32176MLOD36 32176MSOD36 32200MWODD36 32200MWVOD36 32200MCE36	400 mm	20mm	4mm	Millboard Screws Only	N / A	N / A	N / A	No	No

In addition to above, it is recommended that when boards are installed end to end, that a gap of at least 2mm for all timber and Millboard decking is left between the boards.

The ends of each board must be supported on a joist. The maximum recommended unsupported overhang (at the end of a deck) is 50mm.

# Installation Recommendations

## Fencing

### Planning Permission & building regulations

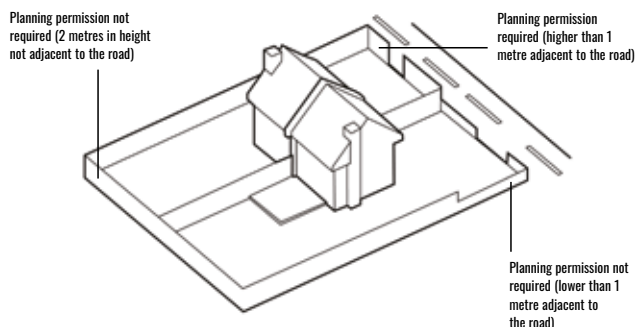
Current government guidelines regarding planning are:

Planning permission is not required provided that:

1. The wall or fence is not more than 2 metres in height anywhere on your property except where it adjoins a road or footpath. In this case the height is restricted to 1 metre.
2. You don't live in an open plan/shared surface type of development. In which case always consult your local area planning office as there may be a condition attached to the planning permission for the estate which would override this guidance.

3. The property is not listed or in a conservation area.

Building regulations are not required for fences, walls and gates. Although building regulations do not apply, the structures must be structurally sound and maintained. Walls, other than timber, forming a boundary between neighbours may be subject to Party Walls Act etc 1996.



## Stainless Steel Wire System Assembly Instructions.

### “Straight Runs into Wooden Posts”

First sort the fittings into Left hand and Right hand threaded units.

1. Take the left handed wood screw fitting and screw it into the post on your left so that the parallel left handed thread is protruding from the post.
2. Take the right handed wood screw fitting and screw it into the post on your right so that the parallel right handed thread is protruding from the post.
3. Next, screw a nut fully onto each of the protruding screws. These will later be used to lock the DIY fittings.
4. Screw a left hand M6 Female threaded assembly half way onto the left hand threaded screw.
5. Screw a right hand M6 Female threaded assembly half way onto the right hand threaded screw.
6. You are now ready to fit the wire. Measure the distance between the two fittings and add the depth of the hole in the fitting (45mm at each end). Cut the cable to this length.
7. Insert the cable fully into the left hand fitting and tighten the three Allen screws. Repeat this procedure for the right hand end and ensure that the cable is fairly tight.
8. Now the clever bit. By rotating the cable and the DIY fittings in one direction the cable will gradually tighten, Turn it in the other direction and it will slacken. Do not over tighten at this stage.
9. Repeat steps 1 – 9 for the rest of the wires you intend to install.
10. Once you have all of the cables in place tighten them evenly and when you are satisfied the last step is to tighten all of the lock nuts and enjoy the view.



### “Angled Runs into Wooden Posts”

1. First sort the fittings into Left hand and Right hand threaded units.
2. Take the M6 Eyebolt with wood screw and screw it fully into the top post of your stairway. Now do the same with the bottom post. Stretch a piece of string between the top eye and the bottom eye and mark the drilling positions for the cable to pass through any intermediate posts.
3. Fit the M6 LH 316 Stainless Steel Threaded Mini Jaw Terminal to the Eyebolt to your left. Do the same with the M6 RH 316 Stainless Steel Threaded Mini Jaw Terminal to the eyebolt on your right.
4. Next, screw a nut fully onto each of the protruding screws. These will later be used to lock the DIY fittings.
5. Screw a Left Hand M6 Female threaded assembly half way onto the Left Hand threaded screw.
6. Screw a Right Hand M6 Female threaded assembly half way onto the Right Hand threaded screw.
7. You are now ready to fit the wire rope. Measure the distance between the two fittings and add the depth of the hole in the fitting (45mm at each end). Cut the cable to this length.
8. Insert the cable fully into the left hand fitting and tighten the three Allen screws, ensuring that the rope is just visible in the inspection hole. Thread through any intermediate posts and then insert the cable into the right hand fitting and ensure that the cable is pulled hand tight to reduce the amount of adjustment.
9. Now the clever bit. By rotating the cable and both DIY fittings in one direction the cable will gradually tighten. Turn the assembly in the other direction and it will slacken. At this time it is best to just take up any slack as final tightening will be carried out after all of the ropes are in position.
10. Repeat steps 1 – 9 for the rest of the wires you intend to install.
11. Once you have all of the cables in place tighten them evenly and when you are satisfied the last step is to tighten all of the lock nuts and enjoy the view.





# Responsible Timber Purchasing Policy

## 1. Management Structure

The company has appointed a Director to be responsible for the implementation of this Policy and will ensure that relevant environmental issues are discussed regularly at the highest level of management. The company will ensure that all employees associated with timber purchasing are aware of the Policy and its commitments, and are given appropriate education and training to allow its full implementation.

## 2. Responsibility

The company recognises that it has a responsibility to the environment, customers, suppliers and staff to base its commercial activities on well-managed forests.

## 3. TDUK Code of Conduct

The company is committed to the Timber Trade Federation Code of Conduct and applies the Environmental Code of Practice to all wood procurement activities.

## 4. Legality

The company is committed to purchasing all timber from legal sources and will seek evidence of compliance from suppliers that they are operating in accordance with the laws of their country. The company unreservedly condemns illegal logging practices and will keep informed of international processes and changes in legislation.

## 5. Endangered Species

The company will not trade in timber species prohibited under Appendix 1 of the CITES legislation and will obtain the appropriate documents for trade in all other CITES-listed timber species.

## 6. Traceability and Supplier Monitoring

The company will obtain a Risk Assessment on all Suppliers, as documented by the RPP. The assessment will seek to provide the clearest practicable information regarding the sources of raw materials used in the manufacture of wood products.

This information will form part of purchasing decisions and will be made available on request to independent verifiers.

## 7. Timber Certification

The company supports international efforts to improve forest management, for example, the development of credible timber certification schemes. This company recognises that the independent certification of the forests and the process chain is the most useful tool for providing assurances that timber comes from legal and well-managed forests. The company will only accept or use labels or certificates that include environmental or sustainability claims — only if they are supported by publicly available standards drawn up in a fully participatory, transparent and objective manner, and are backed by independent inspection.

## 8. Avoid Boycotts

The company will not encourage boycotts or bans on specific species of timber. Notwithstanding this, the company will cease to purchase any timber and timber products whose supply is in breach of the Timber Trade Federation Code of Conduct and, in particular, the Environmental Code of Practice.

## 9. Continuous Improvement

The company is committed to working with relevant trade organisations, NGOs, and governments to develop its purchasing policy. The company is committed to continuously raising the proportion of timber and timber products, in accordance with the stepwise approach, that originates from legal and sustainably managed forests.

## 10. Reporting and Audit

The company will report annually to the appointed auditors. The auditors will assess and verify the company's progress and compliance with the Policy.

A copy of the company's Responsible Purchasing Policy Company Commitments will be available to all stakeholders upon request.

## 11. Additional Commitment, etc.

AW Champion declare not to be directly involved in the following activities:

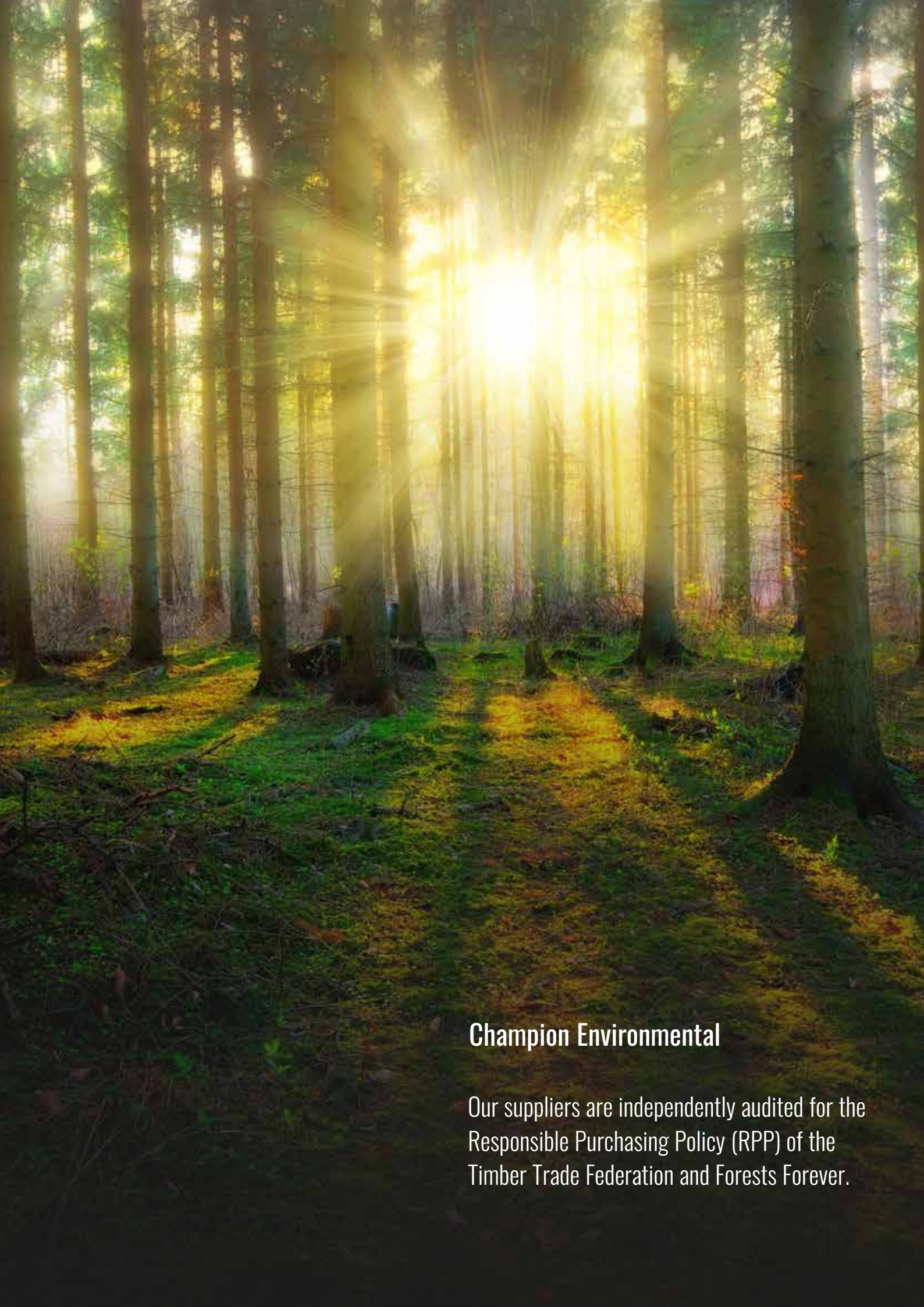
1. Illegal logging or the trade in illegal wood or forest products.
2. Violation of traditional and human rights in forestry operations.
3. Destruction of high conservation values in forestry operations.
4. Significant conversion of forests to plantations or non-forest use.
5. Introduction of genetically modified organisms in forestry operations.
6. Violation of any of the ILO Core Conventions, as defined in the ILO Declaration on Fundamental Principles and Rights at Work, 1998.

**Signed and dated: 18/3/2023**

*Philip Champion*

**Managing Director  
AW Champion**

RPP & UKTR Environmental  
AW Champion



## Champion Environmental

Our suppliers are independently audited for the Responsible Purchasing Policy (RPP) of the Timber Trade Federation and Forests Forever.



# Champion Timber Branches:

Pick up a brochure at any branch or download a brochure at: [www.championtimber.com](http://www.championtimber.com)



## NEW MALDEN also HEAD OFFICE



205 - 209 Burlington Road, New Malden, Surrey, KT3 4NB

Tel: 020 8949 1621

Email: [newmalden@championtimber.com](mailto:newmalden@championtimber.com)

For current opening hours see website

## BROMLEY



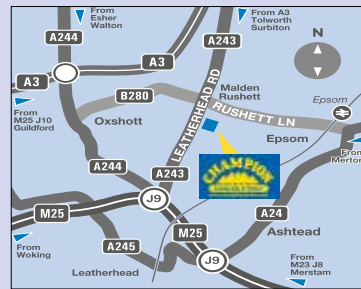
109-123 Southlands Road, Bromley, Kent, BR2 9QX

Tel: 020 8460 6655

Email: [bromley@championtimber.com](mailto:bromley@championtimber.com)

For current opening hours see website

## CHESSINGTON



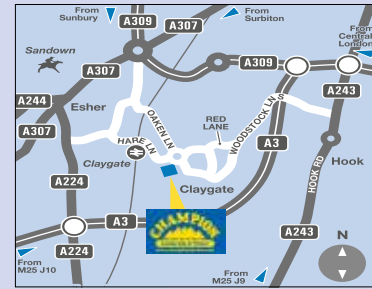
385 Leatherhead Road, Chessington, Surrey, KT9 2NQ

Tel: 01372 847910

Email: [chessington@championtimber.com](mailto:chessington@championtimber.com)

For current opening hours see website

## CLAYGATE



High Street, Claygate, Surrey, KT10 0JW

Tel: 01372 462407

Email: [claygate@championtimber.com](mailto:claygate@championtimber.com)

For current opening hours see website

## DORKING



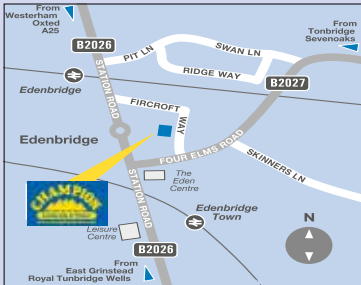
Curtis Road, Dorking, Surrey, RH4 1EJ

Tel: 01306 884418

Email: [dorking@championtimber.com](mailto:dorking@championtimber.com)

For current opening hours see website

## EDENBRIDGE



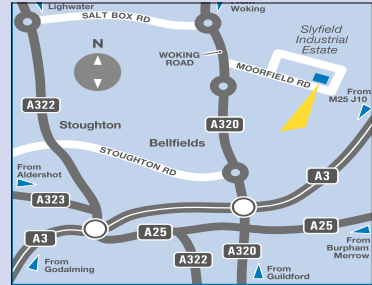
Fircroft Way Industrial Estate, Edenbridge, Kent, TN8 6EL

Tel: 01732 864328

Email: [edenbridge@championtimber.com](mailto:edenbridge@championtimber.com)

For current opening hours see website

## GUILDFORD



Moorfield Road, Slyfield Industrial Estate, Guildford, GU1 1RU

Tel: 01483 510170

Email: [guildford@championtimber.com](mailto:guildford@championtimber.com)

For current opening hours see website

## SUTTON



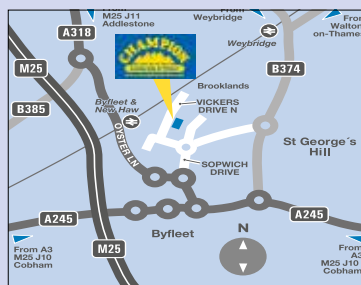
272 - 274 High Street, Sutton, Surrey, SM1 1PG

Tel: 020 8642 8291

Email: [sutton@championtimber.com](mailto:sutton@championtimber.com)

For current opening hours see website

## WEYBRIDGE



Unit A303, Brooklands Industrial Estate, Vickers Drive, Weybridge, KT13 0YU

Tel: 01932 359780

Email: [weybridge@championtimber.com](mailto:weybridge@championtimber.com)

For current opening hours see website

## WIMBLEDON



2 Hartfield Crescent, entrance off Beulah Road, Wimbledon, SW19 3SB

Tel: 020 8542 1606

Email: [wimbledon@championtimber.com](mailto:wimbledon@championtimber.com)

For current opening hours see website



Printed on recycled papers

Delivering over a wide area



April 2024